



Gulf and Quebec Regions

Notice to Fish Harvesters

EKME: 4228795

2021 – CONSERVATION AND HARVESTING PLAN AND OPENING DATE OF THE SOUTHERN GULF OF ST. LAWRENCE HERRING BAIT FISHERY

Moncton, NB – April 14, 2021 – Fisheries and Oceans Canada (DFO) announces today the Conservation and Harvesting Plan (CHP) for the 2021 herring bait fishery in the southern Gulf of St. Lawrence in Herring Fishing Areas 16A to G and 17. The herring bait fishery will open on April 15, 2021.

2021 - Herring Bait Fishery Conservation Harvesting Plan

Bait licences are issued to fish harvesters who hold a licence for a species and gear that requires bait. Since 2003, herring and mackerel bait licences have been combined together in order to facilitate the enforcement of regulation by fishery officers.

This Conservation Harvesting Plan is valid for the Herring Fishing Areas 16A to 16G.

NEW IN 2021

Validity period

In 2021, herring bait licence conditions will be valid from April 15 to June 30 and then from July 1 to October 31.

Weekend closures

To accommodate the acoustic survey, there will be weekend closures for all Herring Fishing Areas every week beginning at 12:00 Atlantic Daily Time (ADT) on Friday and ending at 12:00 (ADT) on Sunday.

Maximum weekly quantity allowed

In 2021, the maximum quantity of herring or mackerel or the combination of both species a fish harvester is permitted to catch and retain between Sunday at 12:00 ADT (noon) and the following Friday at 12:00 ADT (noon) is 2,270 kg in total.

OTHER MANAGEMENT MEASURES

Catch reporting

A hail-in of catch estimate is now mandatory before entering port for fish harvesters from the Gulf Region. **ALL herring/mackerel licence holders** will need to enter in an agreement with a dockside monitoring company prior to commencing the fishery. As detailed in the conditions of licence, herring/mackerel bait licence holders will still be required to:

- **MAINTAIN** a Bait Fishery Monitoring Document;
- **HAIL-IN** the catch estimates to a dockside monitoring company; and
- **SEND** the report of these catches to their dockside monitoring company as indicated in the licence conditions.

The use of an electronic logbook (Elog) is mandatory for licence holders from the Québec Region to declare the catch estimates after every fishing trip before entering port.

Gear marking

In December 2019, Fisheries and Oceans Canada announced the mandatory gear marking requirements for all non-tended fixed gear fisheries in Eastern Canada starting in 2020. Specific requirements are explained in the [Notice to Fish Harvesters that was issued August 14, 2020](#) and details of these requirements are found in the herring/mackerel bait licence conditions.

Gear allowed

A maximum of 3 gillnets for a maximum total length of 50 fathoms with a minimum mesh size of 57.1 mm from April 15 until June 30 and 66.7 mm (63.5 mm in 16A) in July, September and October are authorized.

Fishing restrictions

It is strictly forbidden to sell any species of fish caught under the authority of a bait licence.

While fishing under the authority of a commercial herring, mackerel or gaspereau licence, bait licences are not valid. Furthermore, a fish harvester cannot fish under the authority of a bait licence in the same calendar day that they have landed herring, mackerel or gaspereau under the authority of a commercial licence. It is strictly forbidden to sell any species of fish caught under the authority of a bait licence.

Closed spawning grounds

The spawning grounds in HFA 16B, 16C, 16D and 16E defined in the following charts 1 to 5 are closed from April 1 until June 30.

REPORTING REQUIREMENTS

Bait Fishery Monitoring Document

All fish harvesters actively fishing with a herring/mackerel bait licence **MUST REPORT** their fishing activities whether there were fish caught or not.

Gulf Region fish harvesters: Must complete a Bait Fishery Monitoring Document before entering port.

Québec Region fish harvesters: The Elog must be completed for each fishing expedition and “closed” before arriving at port/landing. A fishing expedition means a voyage that commences at the time a fishing vessel leaves a port to engage in fishing and terminates at the time fish caught during that period are offloaded. Hence, when a fisher goes back to port for a reason other than for offloading fish and leaves port again, the fishing expedition goes on until fish are offloaded.

To consult the list of client applications approved by the Department and to obtain you Elog key, visit Fisheries and Ocean’s web page at the following address: <http://www.dfo-mpo.gc.ca/elogs>.

To request a modification to data that has been transmitted to Fisheries and Oceans Canada, you must communicate with the client support service at 1-877-535-7307.

Lost Gear Reporting

Gulf Region fish harvesters must report any lost fishing gear to Fisheries and Oceans Canada (DFO) by completing and submitting the [Lost Fishing Gear Form](#) online within 24 hours of entering to port after noticing the loss of gear. A Lost Fishing Gear Form is also included in the herring/mackerel bait license conditions.

Quebec Region fish harvesters must report any of their lost fishing gear to Fisheries and Oceans Canada gear within 24 hours of returning to port at the end of the fishing trip. Reports of lost gear must be submitted to Fisheries and Oceans Canada by completing the section reserved for that purpose in its electronic logbook.

Retrieved Gear Reporting

Gulf Region fish harvesters must report the retrieval of any of their own previously reported lost gear to DFO by completing and submitting the [Retrieval of Previously Reported Fishing Gear Form](#) online within 24 hours of entering to port after retrieving gear previously reported as lost. Retrieval can only occur during the validity period of the license conditions and only in relation to the specific type of gear authorized to be used by the license conditions. A Retrieval of Previously Reported Fishing Gear Form is also included in the herring/mackerel bait license conditions.

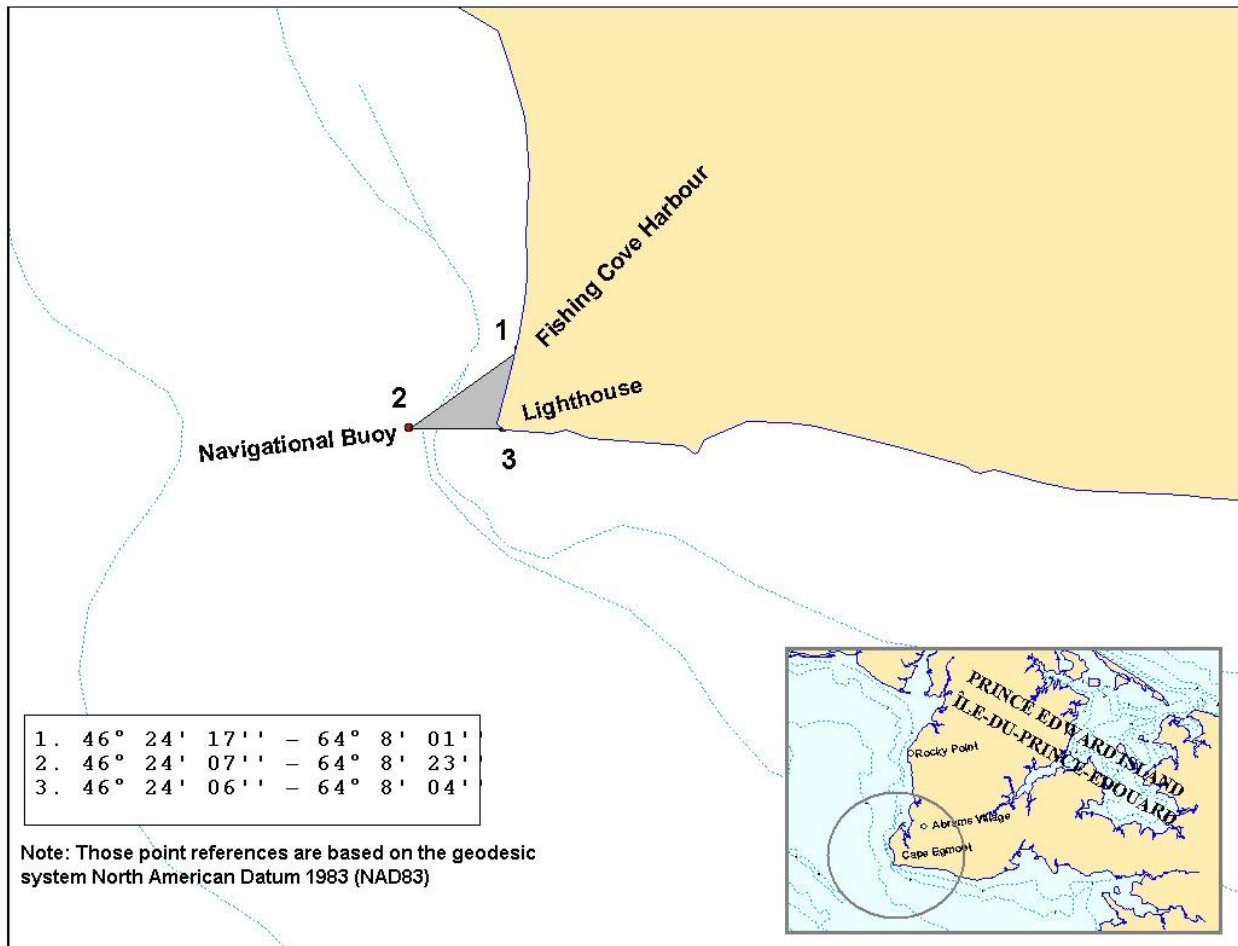
Quebec Region fish harvesters must report the retrieval of any of their own previously reported lost gear within 24 hours of returning to port at the end of the fishing trip. Reports of retrieved gear must be submitted to Fisheries and Oceans Canada by completing the Retrieval of Previously Reported Lost Fishing Gear form in its electronic logbook. If this form is not available in the electronic logbook, the report of the retrieval of previously reported lost gear must be done by completing and submitting the [Retrieval of Previously Reported Fishing Gear Form](#) online or available in annex of the license conditions. Retrieval can only occur during the validity period of the license conditions and only in relation to the specific type of gear authorized to be used by the license conditions.

FOR MORE INFORMATION:

Ben Moore Resource Management Fisheries and Oceans Canada Charlottetown, PE (902) 370-7094	Mario Gaudet Resource Management Fisheries and Oceans Canada Tracadie, NB (506) 871-0648	Alan Dwyer Resource Management Fisheries and Oceans Canada Antigonish, NS (902) 735-7114
Caroline Leclerc Resource Management Fisheries and Oceans Gaspé, QC (418) 368-5559	Josée Richard Resource Management Fisheries and Oceans Cap-aux-Meules, QC (418) 986-2095	Cécile Lavoie Resource Management Fisheries and Oceans Canada Moncton, NB (506) 951-5099
Mathieu Pellerin Resource Management Fisheries and Oceans Québec, QC (418) 572-9957	David Giard Resource Management Fisheries and Oceans Canada Moncton, NB (506) 866-9053	

CHART 1

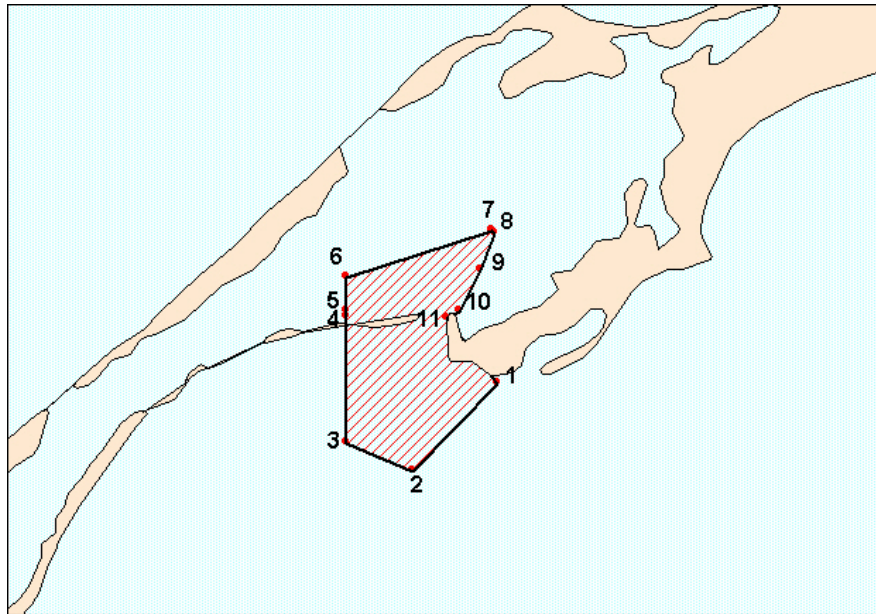
Closure of the commercial spring fishery in a portion of HFA 16E near Cape Egmont



Note: These reference points are based on the geodesic system North American Datum 1983 (NAD83)

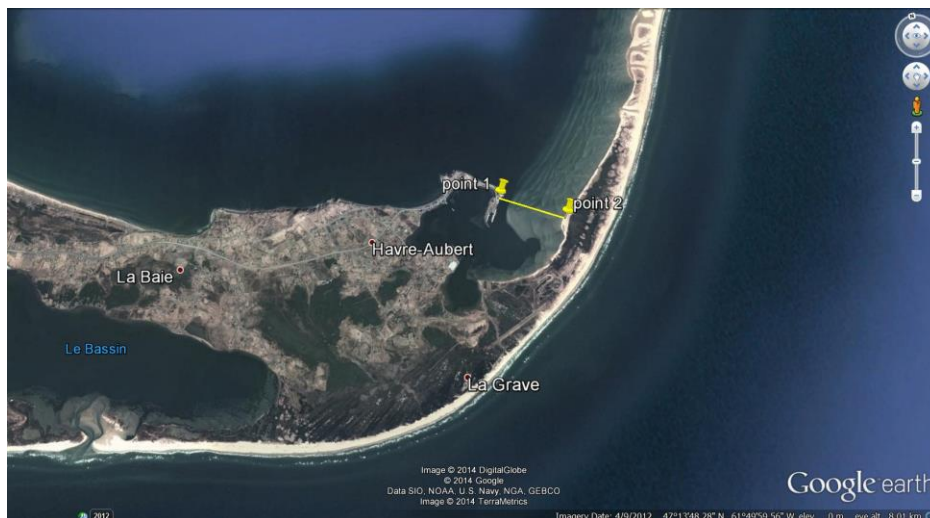
CHART 2

Exclusion zone in the Grande-Entrée Channel in HFA 16D



- | | | | |
|----|-------------------------------|-----|-------------------------------|
| 1. | 47° 32' 30" N - 61° 32' 39" W | 7. | 47° 34' 39" N - 61° 32' 46" W |
| 2. | 47° 31' 16" N - 61° 34' 26" W | 8. | 47° 34' 37" N - 61° 32' 43" W |
| 3. | 47° 31' 40" N - 61° 35' 48" W | 9. | 47° 34' 06" N - 61° 33' 00" W |
| 4. | 47° 33' 26" N - 61° 35' 48" W | 10. | 47° 33' 31" N - 61° 33' 27" W |
| 5. | 47° 33' 31" N - 61° 35' 48" W | 11. | 47° 33' 25" N - 61° 33' 43" W |
| 6. | 47° 34' 00" N - 61° 35' 48" W | | |

Exclusion zone in the Havre Aubert harbour in HFA 16D

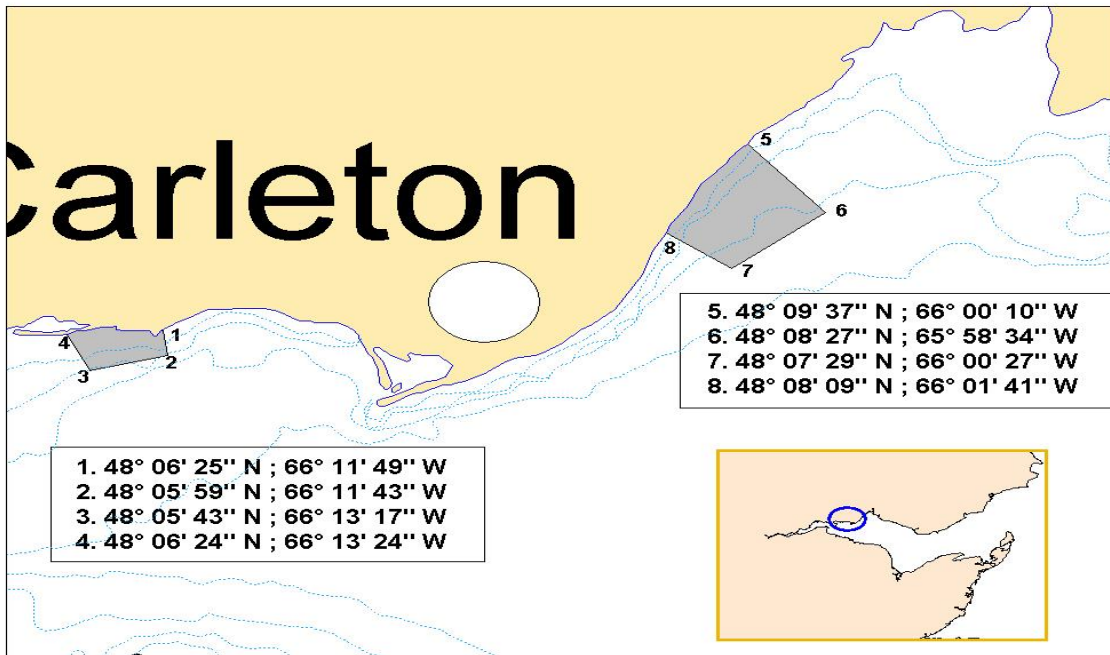
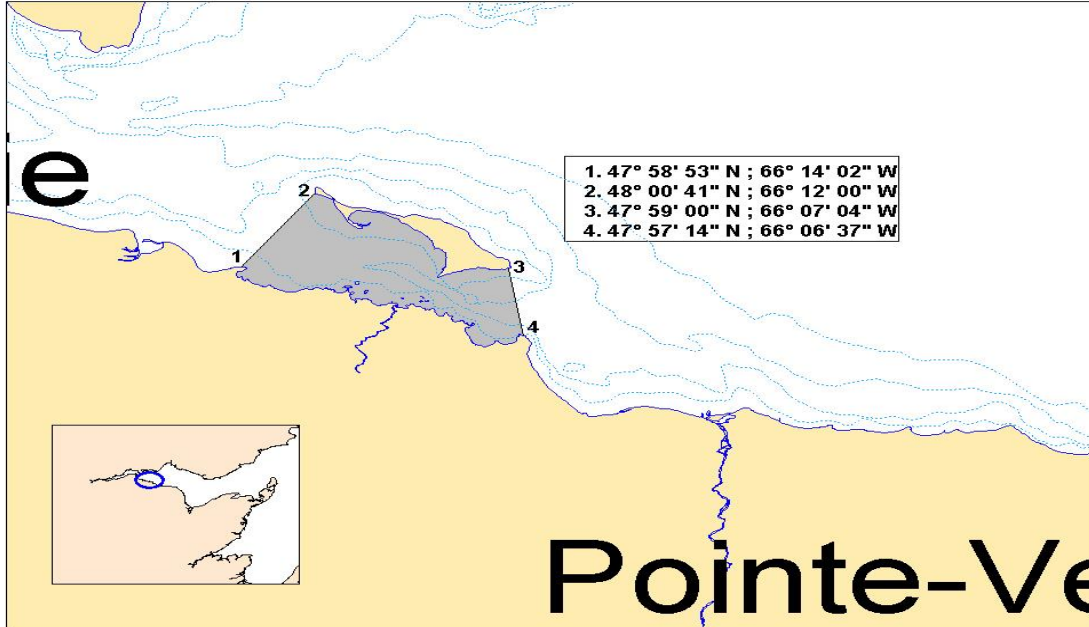


- | | | | |
|----|-------------------------------------|----|-------------------------------------|
| 1. | 47° 14' 09.20" N - 61° 49' 40.10" W | 2. | 47° 13' 57.30" N - 61° 49' 09.90" W |
|----|-------------------------------------|----|-------------------------------------|

Note: These reference points are based on the geodesic system North American Datum 1983 (NAD83)

CHART 3

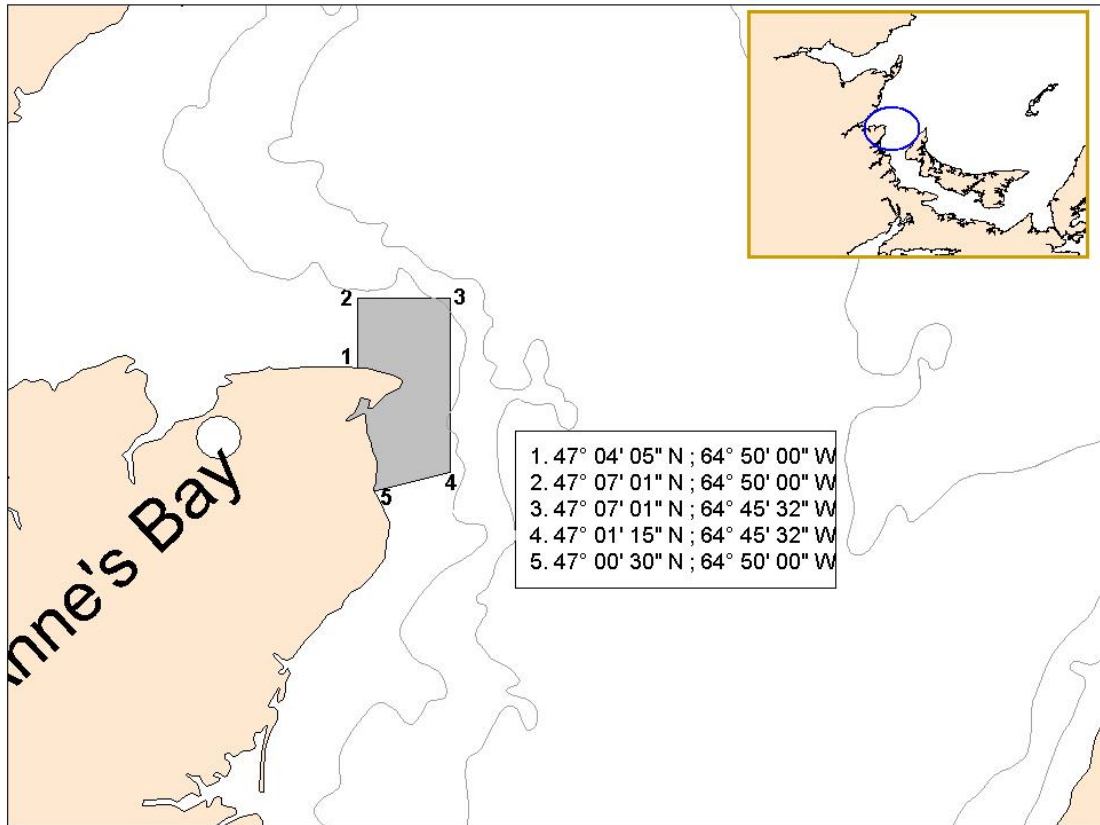
Closure of the spring commercial fishery on spawning beds in New Mills, Carleton and St-Omer in HFA 16B (Grey zones)



Note: These reference points are based on the geodesic system North American Datum 1983 (NAD83)

CHART 4

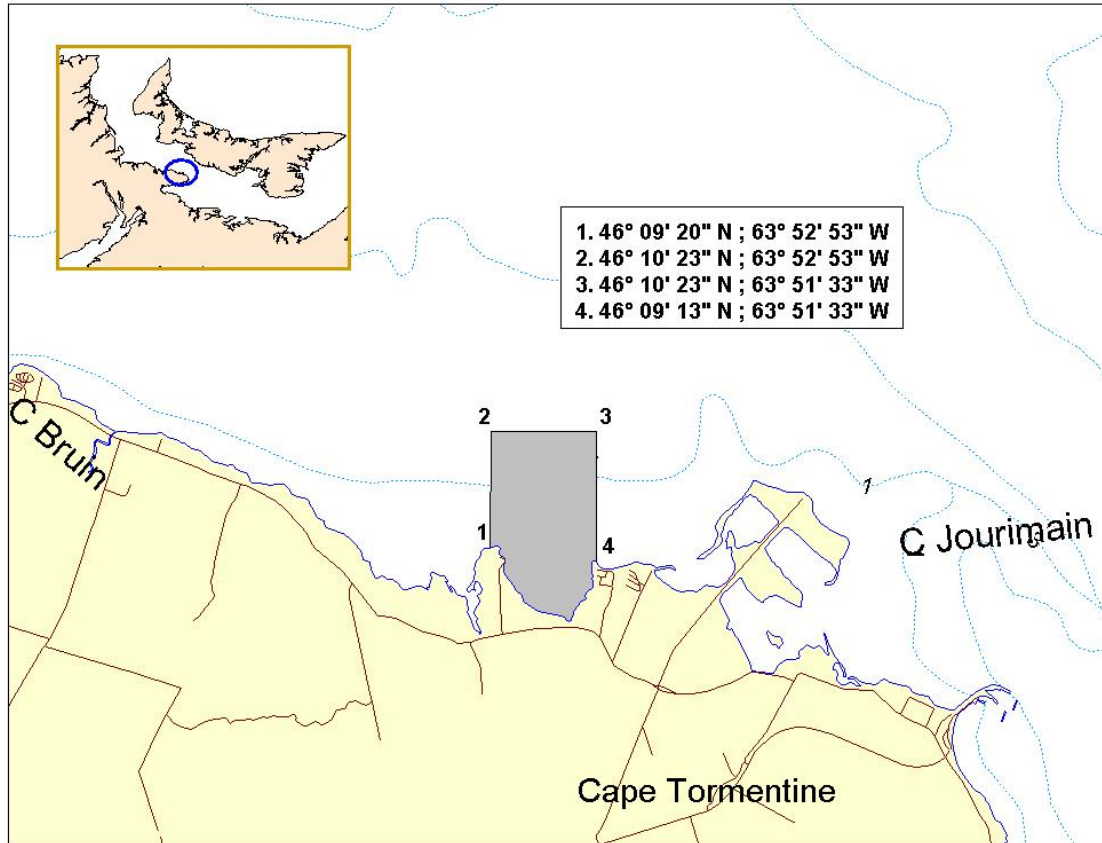
Closure of the spring commercial fishery on a spawning bed near Point Escuminac (N.B.) in HFA 16C (Grey area)



Note: These reference points are based on the geodesic system North American Datum 1983 (NAD83)

CHART 5

**Closure of the spring commercial fishery on a spawning bed near
Cape Jourimain (N.B.) in HFA 16E (Grey area)**



Note: These reference points are based on the geodesic system North American Datum 1983 (NAD83)