



Notice to Fish Harvesters

North Atlantic Right Whale – Notice for the Re-opening of All Grids in the Gulf of St Lawrence

November 22, 2021 – Fisheries and Oceans Canada (DFO) is providing notice of grid status updates related to North Atlantic Right Whale (NARW). The information presented herein is consistent with the 2021 NARW management measures previously announced by DFO.

All times listed in this document are in Atlantic Standard Time (AST).

New updates are in effect in the following waters (refer to the corresponding annex for details):

- **In accordance with the fisheries management measures to protect NARW in effect since April, the management measures are hereby lifted for the 2021 season in the Gulf of St Lawrence. Therefore, all grids that were previously closed in the Gulf of St Lawrence will be re-opening. A complete list of grid re-openings can be consulted in Annex 1.**

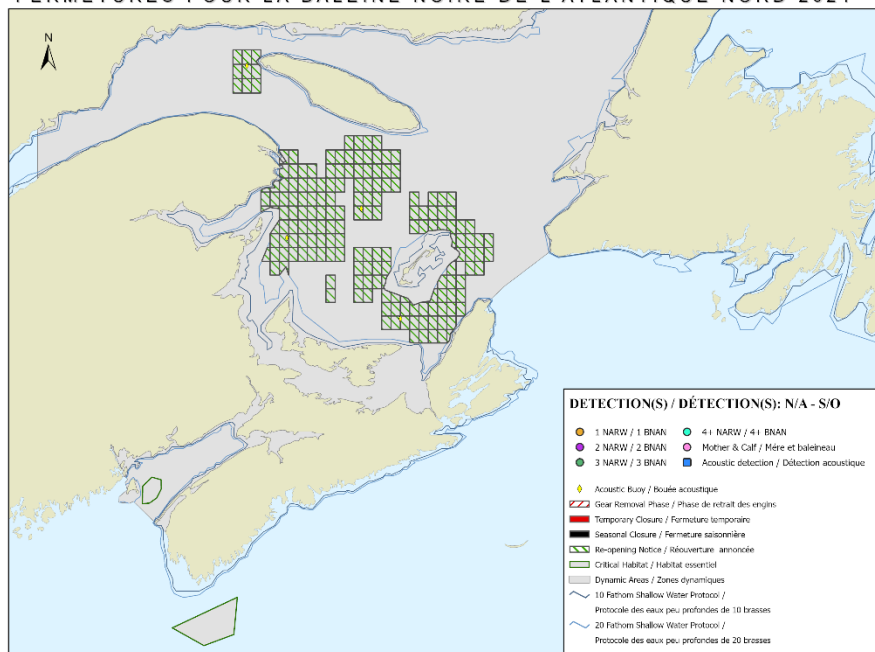
All NARW related grid closures currently in effect in Canadian waters are provided in the following corresponding annexes:

- Annex 1 – for the Gulf of St Lawrence.
- Annex 2 – for the Bay of Fundy
- Annex 3 – for the Roseway Basin Critical Habitat
- Annex 4 – for all waters outside of the dynamic or critical habitat areas

DFO asks licence holders to be vigilant during fishing activities concerning the presence of North Atlantic Right Whales. Furthermore, please be reminded that it is the responsibility of the licence holder to take into account the marine safety notices issued, amongst others, by Environment and Climate Change Canada and Transport Canada, as well as the standards and best practices in marine safety, and to take all measures to ensure safe fishing operations.

Any reference to the term “Notice” in this document means this “Notice to Fish Harvesters”. The Notice to Fish Harvesters, including its annexes, is provided for information purposes only. In case of discrepancy between the information in the Notice to Fish Harvester and a Variation Order, the latter will prevail.

2021 NORTH ATLANTIC RIGHT WHALE CLOSURES
 FERMETURES POUR LA BALEINE NOIRE DE L'ATLANTIQUE NORD 2021



Date Created / Date Créée: 2021-11-22

Prepared by the Atlantic Marine Mammal Hub
 Préparé par le Centre des mammifères marins de l'Atlantique

Fisheries and Oceans / Pêches et Océans
 Canada

Map presenting all grid re-opening in Eastern Canada related to previous detection of NARW
 (The above map has no legal bearing and is provided for visual reference only.)

For more information:

Regular updates and maps indicating detections will be posted here:

<http://dfo-mpo.gc.ca/species-especes/mammals-mammiferes/narightwhale-baleinenoirean/alerte-alerte/index-eng.html>

Annex 1 – Gulf of St Lawrence – NARW Related Closures in Effect**All grids are re-opening(s)**

The following grids are re-opening on **November 23, 2021 at 5:00 p.m.:**

- Full grid(s) **GM31, GM32, GN31, GN32, GO31, GO32, GO33, GS43, GS44, GS45, GS46, GT37, GT41, GT42, GT43, GT44, GT45, GT46, GT47, GT48, GU37, GU38, GU39, GU41, GU42, GU43, GU44, GU45, GU46, GU47, GU48, GV37, GV38, GV39, GV40, GV41, GV42, GV44, GV45, GV46, GV47, GV48, GW34, GW35, GW36, GW37, GW38, GW39, GW40, GW41, GW44, GW45, GW46, GW50, GW52, GW53, GW54, GX36, GX37, GX38, GX39, GX40, GX41, GX42, GX44, GX45, GX46, GX50, GX51, GX52, GX53, GX54, GY36, GY37, GY38, GY39, GY40, GY41, GY42, GY50, GY55, GY56, GZ35, GZ36, GZ37, GZ38, GZ39, GZ40, GZ41, GZ42, GZ55, GZ56, GZ57, GZ58, HA35, HA36, HA37, HA38, HA39, HA40, HA41, HA42, HA44, HA45, HA46, HA47, HA56, HA57, HA58, HB35, HB44, HB45, HB46, HB56, HB57, HC41, HC44, HC45, HC46, HC54, HC55, HD41, HD44, HD45, HD53, HD54, HD55, HE47, HE48, HE49, HE52, HE53, HE54, HF47, HF48, HF49, HF50, HF51, HF52, HF53, HG51, HG52, HG53**
- Portion of grid(s) deeper than the 20 fathom shallow water protocol line only **GM33, GN33, GT36, GU36, GV34, GV35, GV36, GX34, GX35, GY35, GY51, GY52, GY53, GY54, GZ54, HA34, HA54, HA55, HB36, HB47, HB54, HC47, HC53, HD47, HD48, HD49, HD50, HD51, HD52, HE50, HE51, HE55, HF54, HG50, HG54**

Annex 2 – Bay of Fundy – NARW Related Closures in Effect

There are no grid closures related to NARW in the Bay of Fundy.

Annex 3 – Roseway Basin Critical Habitat – NARW Related Closures in Effect

There are no grid closures related to NARW in the Roseway Basin Critical Habitat.

Annex 4 – Outside of the dynamic and critical habitat areas – NARW Related Closures in Effect

There are no other grid closures related to NARW in the waters outside of the dynamic and critical habitat areas.