

# Notice to Fish Harvesters

EKME: 4038670

## CONSERVATION AND HARVESTING PLAN FOR THE SOUTHERN GULF OF ST. LAWRENCE SPRING HERRING FISHERY

**MONCTON** – Fisheries and Oceans Canada (DFO) announced today the spring Southern Gulf of St. Lawrence herring (Herring Fishing Areas 16A to G and 17) Conservation and Harvesting Plan.

Given that the spring component of the stock remains at low levels, the Total Allowable Catch (TAC) will be set at 1,250 t for 2019. For this year only, the management measures will remain the same as during the 2018 spring herring fishing season to continue the rebuilding of the spring component of this stock.

### Distribution of Spring Quotas (metric tonnes)

FLEET	SPRING 2019
Inshore fleet Areas 16A-16G	961
Gulf large purse seine fleet	289
<b>TOTAL</b>	<b>1,250</b>

### Inshore fleet quota distribution ( metric tonnes) in Herring Fishing Areas 16A to 16G and 17

Herring Fishing Area	2019 Allocation
16A	2.5
16B	44.5
16C	81
16D	14
16E	284
16F	4
16G	6
16A-16G (June 1 – 30)	39
17	10
RESERVE	476

\* For more details on inshore quota distribution rules, please refer to Annexe I.

### **Large Purse Seine fleet fishery on “the Edge” (4T)**

This fishery, designed to target fall spawners during the month of May and June, will continue in the 2019 fishing seasons with the same parameters and management measures as in 2018. This fleet is authorized to fish their fall herring quota along the Edge in 4T during the spring season (May-June) using purse seine gear. A small fish protocol that reduces the remaining available quota according to the percentage of herring smaller than 23.5 cm (fork length) in the catch will be maintained. As in 2018, management measures will include: 20% independent at-sea observer coverage, 100% dockside monitoring, and mandatory vessel monitoring system to monitor this fishery. (See annex 2 for all details).

#### **INFORMATION**

Ben Moore Resource Management Fisheries and Oceans Canada Charlottetown, PE (902) 370-7094	Sandra Comeau Resource Management Fisheries and Oceans Canada Tracadie, NB (506) 395-7765	Alan Dwyer Resource Management Fisheries and Oceans Canada Antigonish, NS (902) 735-7114
Caroline Leclerc Resource Management Fisheries and Oceans Gaspé, QC (418) 368-5559	Josée Richard Resource Management Fisheries and Oceans Cap-aux-Meules, QC (418) 986-2095	Pierre Mallet Resource Management Fisheries and Oceans Canada Moncton, NB (506) 851-7792

## **2019 Conservation Harvesting Plan**

### **Spring Inshore Gillnet Fishery**

- A Dockside Monitoring Program (DMP) with 100% dockside verification will be required in all Herring Fishing Areas (HFA) except 16A, 16B (Québec) and 16D, where a Catch Monitoring Program (CMP) with 100% radio hail and a minimum of 25% verification at dockside, as well as logbook will be in place. The DMP companies will have to provide, on a daily basis to DFO, the amount of herring landed/hailed per fish harvester. In addition, a logbook will be mandatory for any herring landed in the Québec Region. Fish harvesters from New Brunswick, landing their catches in the Québec Region must acquire a logbook (FC-EP-01 or FC-EP-02) from one of the suppliers listed at the following website address: [www.dfo-mpo.gc.ca/fm-gp/sdc-cps/nir-nei/log-suppliers-eng.htm](http://www.dfo-mpo.gc.ca/fm-gp/sdc-cps/nir-nei/log-suppliers-eng.htm).
- The use of an electronic logbook (Elog) is mandatory as of 2019. Fish harvesters must use a client application approved by Fisheries and Oceans Canada for the Quebec region for the form ELOG - Logbook – Gillnets. Furthermore, fish harvesters must have obtained and installed their Elog Key in their client application in order to allow data transmission to the Department.
- For Quebec harvesters, the Elog must be completed for each fishing expedition and “closed” before arriving at port/landing. A fishing expedition means a voyage that commences at the time a fishing vessel leaves a port to engage in fishing and terminates at the time fish caught during that period are offloaded. Hence, when a fisher goes back to port for a reason other than for offloading fish and leaves port again, the fishing expedition goes on until fish are offloaded. To consult the list of client applications approved by the Department and to obtain your Elog key, visit Fisheries and Oceans’ web page at the following address: [www.dfo-mpo.gc.ca/elogs](http://www.dfo-mpo.gc.ca/elogs). To request a modification to data that has been transmitted to Fisheries and Oceans, you must communicate with the client support service at 1-877-535-7307.
- Weekly landing limits of 10,206 kg will be implemented in all HFAs except 16A, 16D and 16F, where no restrictions will apply.
- Spawning areas will be closed in all HFAs except 16A and 16F (Charts 1 to 6).
- No nets or herring will be allowed to be on board during a fishing trip between 18:00 and 04:00 (ADT) every day (due to safety considerations), in all HFAs, except 16A and 16B, where no nets or herring will be allowed to be on board during a fishing trip between 22:00 and 03:00 (ADT) every day.
- Landings are counted against the quota in the area where the fish is landed when the said area is open. Landings are counted against the quota in the adjacent area when the fish is landed in a closed area.
- Other management measures are outlined in Table 1.

### **Bait fishery**

Bait licences are issued to fish harvesters who hold a licence for a species and gear that requires bait. Since 2003, herring and mackerel bait licences have been combined together in order to facilitate the enforcement of regulation by fishery officers. With the bait licence, a fish harvester

may only fish for their own use up to a maximum of 50 fathoms of gillnets.

Monitoring of bait landings will continue in 2019. As detailed in the conditions of licence, bait licence holders will be required to maintain a log of catches and report these catches.

For Quebec harvesters, the Elog must be completed for each fishing expedition and “closed” before arriving at port/landing. A fishing expedition means a voyage that commences at the time a fishing vessel leaves a port to engage in fishing and terminates at the time fish caught during that period are offloaded. Hence, when a fisher goes back to port for a reason other than for offloading fish and leaves port again, the fishing expedition goes on until fish are offloaded. To consult the list of client applications approved by the Department and to obtain your Elog key, visit Fisheries and Oceans’ web page at the following address: [www.dfo-mpo.gc.ca/elogs](http://www.dfo-mpo.gc.ca/elogs). To request a modification to data that has been transmitted to Fisheries and Oceans, you must communicate with the client support service at 1-877-535-7307.

The minimum mesh size will be 57.1 mm from January 1 to June 30 and 66.7 mm (63.5 mm in 16A) from July 1 to December 31. In 2019, the maximum quantity of herring or mackerel or the combination of both species a fish harvester is permitted to catch and retain at any time is 907 kg in total.

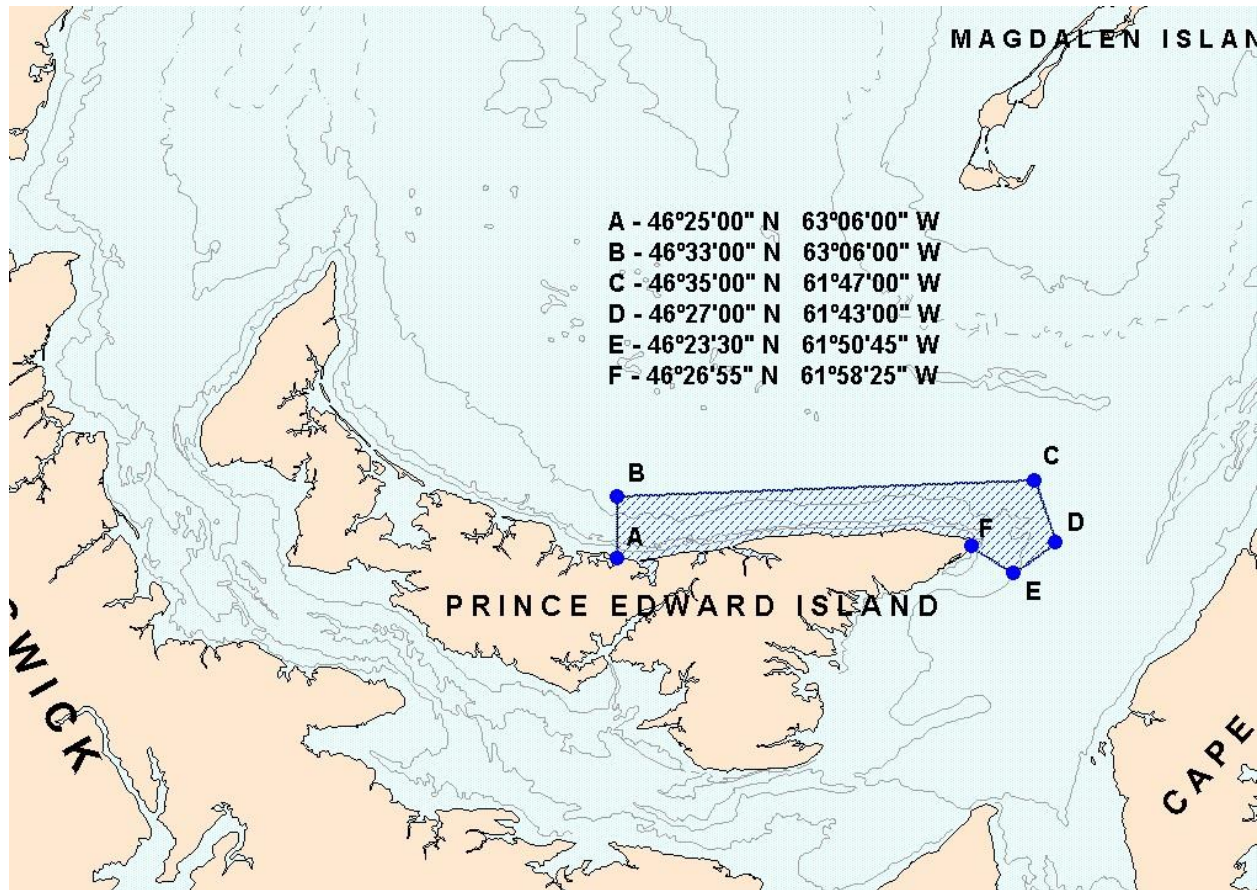
While fishing under the authority of a commercial herring, mackerel or gaspereau licence, bait licences are not valid. Furthermore, a fish harvester cannot fish under the authority of a bait licence in the same calendar day that they have landed herring, mackerel or gaspereau under the authority of a commercial licence. It is strictly forbidden to sell any species of fish caught under the authority of a bait licence.

**TABLE 1**

<b>SUMMARY OF THE SPRING INSHORE MANAGEMENT MEASURES BY HFA – 2019</b>						
<b>Fishing Area</b>	<b>Dockside Monitoring Program (DMP) or Catch Monitoring Program (CMP)</b>	<b>Quota</b>	<b>Period</b>	<b>Net (mesh size / depth / length)</b>	<b>Weekend Closures</b>	<b>Trip Limit</b>
16A – Île Verte	CMP - declaration of 100% of catches through the radio and dockside verification for 25% of landings	2.5	April 1 to May 31	57.1mm min / 100 meshes / 375 fath.	None	No limit
16B – Baie des Chaleurs (fixed gear)	DMP (in NB)	44.5	April 1 to May 31	57.1mm min / 100 meshes / 300 fath.	None	Weekly limit of 10,206 kg (22,250 lb)
Small purse Seiners	CMP in Québec - declaration of 100% of catches through the radio and dockside verification for 25% of landings		April 1 to May 31	N/A	None	Weekly limit of 10,206 kg (22,250 lbs)
16C – Escuminac	DMP	81	April 23 to May 31	57.1mm min / 125 meshes / 343 fath.	12:00 (noon) Friday to 12:00 (noon) Saturday	Weekly limit of 10,206 kg (22,250 lb)
16D – Magdalen Islands	CMP - Well-keeping of a combined logbook /sales slip, declaration of 100% of catches through the radio and dockside verification for 25% of landings	14	April 9 to May 31	57.1mm min / 125 meshes / 200 fath.	None	No limit
16E – Western PEI, south-eastern NB and northern GNS	DMP	284	April 1 to May 31	57.1mm min / 125 meshes / 343 fath.	None	Weekly limit of 10,206 kg (22,250 lbs)
16F – Pictou	DMP	4	April 26 to May 31	57.1mm min / 150 meshes / 180 fath.	12:00 (noon) Sunday to 12:00 (noon) Monday	No limit
16G – Fishermen’s Bank	DMP	6	April 26 to May 31	57.1mm min / 100 meshes / 343 fath.	12:00 (noon) Friday to 12:00 (noon) Saturday	Weekly limit of 10,206 kg (22,250 lbs)
16A-G	As per individual areas (above)	39	June 1 – June 30	As per individual areas (above)	None	As per individual areas (above)

## CHART 1

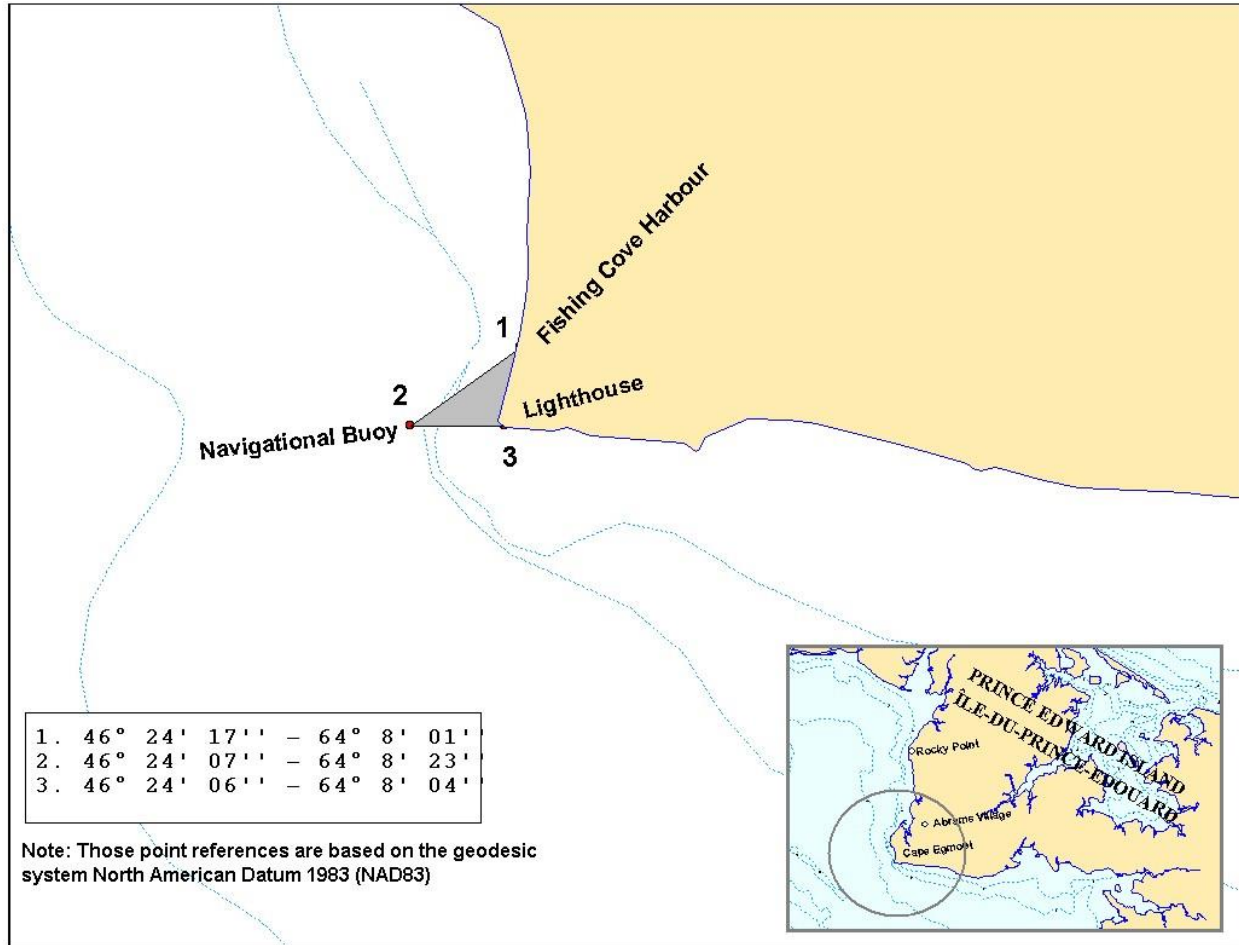
### Closure of the commercial inshore herring fishery off northeast PEI (April 1 to June 30) and of the large purse seiners herring fishery (year round)



Note: These reference points are based on the geodesic system North American Datum 1927 (NAD27)

## CHART 2

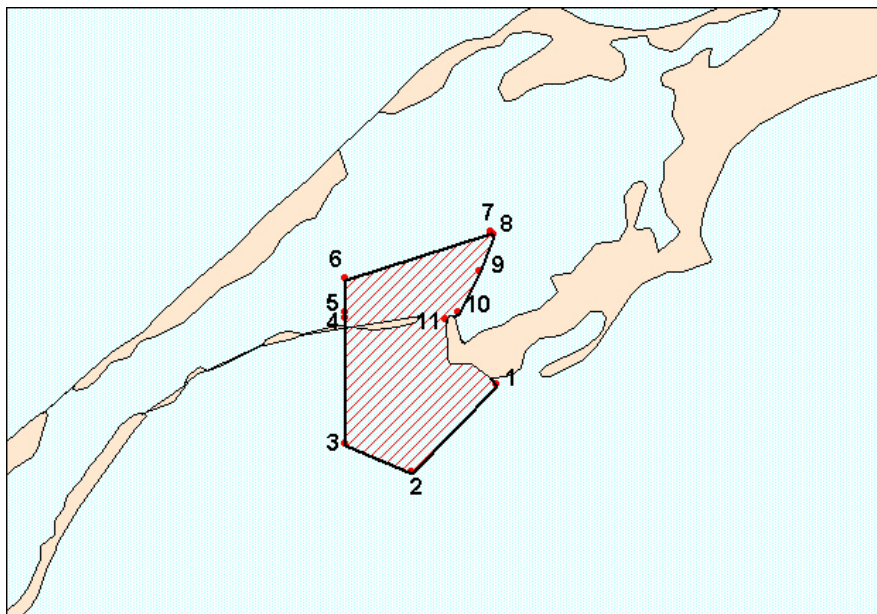
### Closure of the commercial spring fishery in a portion of HFA 16E near Cape Egmont





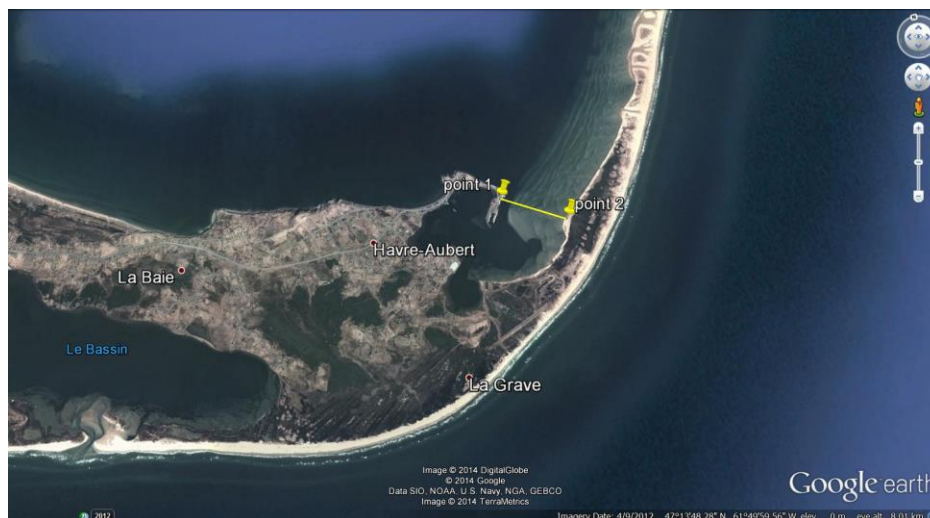
## CHART 3

### Exclusion zone in the Grande-Entrée Channel in HFA 16D



- |    |                               |     |                               |
|----|-------------------------------|-----|-------------------------------|
| 1. | 47° 32' 30" N - 61° 32' 39" W | 7.  | 47° 34' 39" N - 61° 32' 46" W |
| 2. | 47° 31' 16" N - 61° 34' 26" W | 8.  | 47° 34' 37" N - 61° 32' 43" W |
| 3. | 47° 31' 40" N - 61° 35' 48" W | 9.  | 47° 34' 06" N - 61° 33' 00" W |
| 4. | 47° 33' 26" N - 61° 35' 48" W | 10. | 47° 33' 31" N - 61° 33' 27" W |
| 5. | 47° 33' 31" N - 61° 35' 48" W | 11. | 47° 33' 25" N - 61° 33' 43" W |
| 6. | 47° 34' 00" N - 61° 35' 48" W |     |                               |

### Exclusion zone in the Havre Aubert harbour in HFA 16D



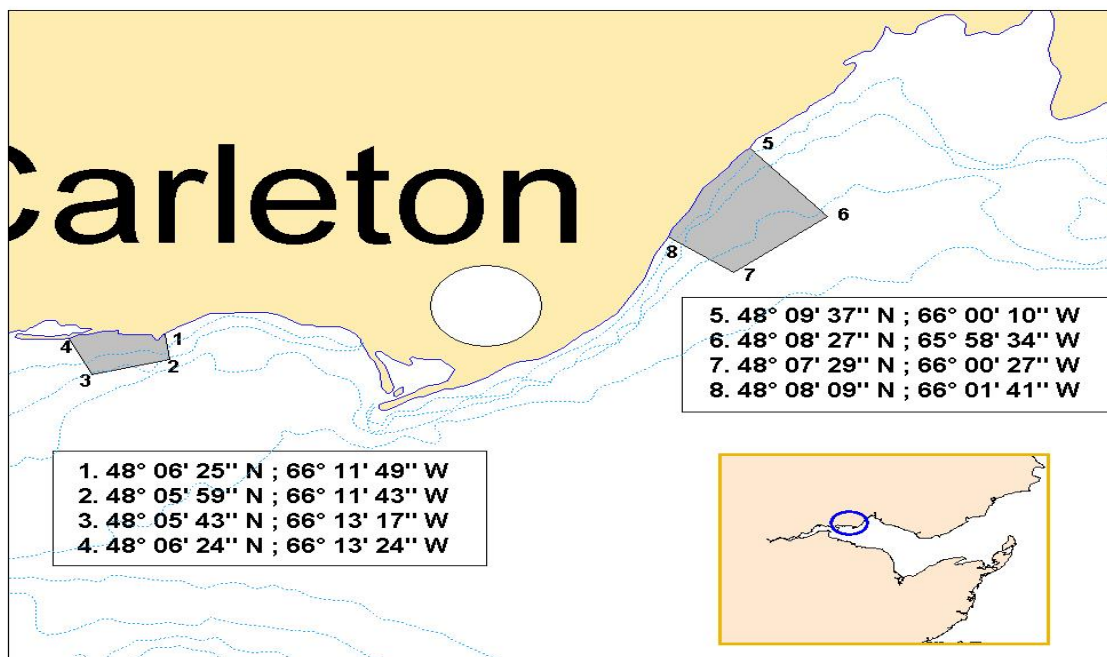
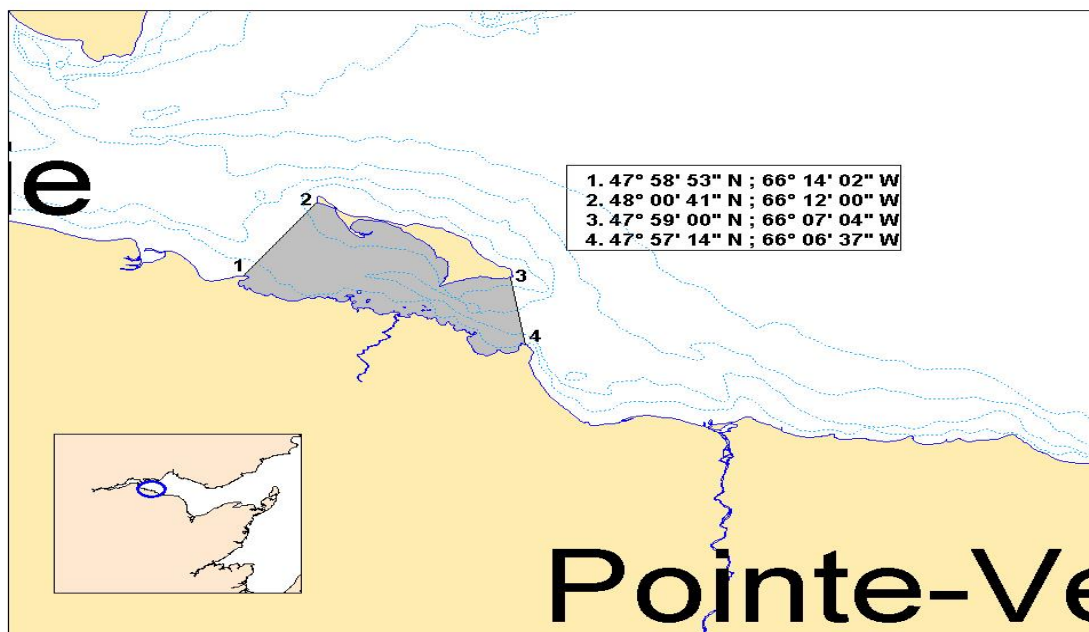
- |    |                                     |    |                                     |
|----|-------------------------------------|----|-------------------------------------|
| 1. | 47° 14' 09.20" N - 61° 49' 40.10" W | 2. | 47° 13' 57.30" N - 61° 49' 09.90" W |
|----|-------------------------------------|----|-------------------------------------|

Note: These reference points are based on the geodesic system North American Datum 1983 (NAD83)



# CHART 4

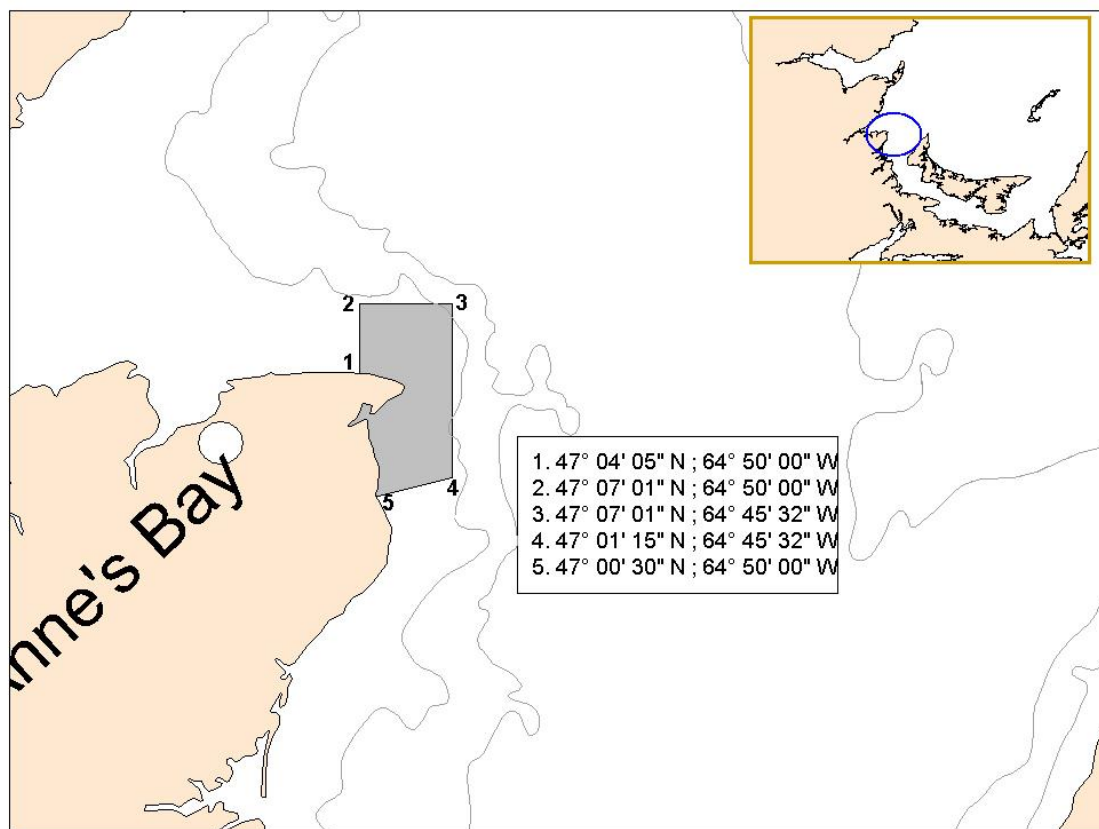
## Closure of the spring commercial fishery on spawning beds in New Mills, Carleton and St-Omer in HFA 16B (Grey zones)



Note: These reference points are based on the geodesic system North American Datum 1983 (NAD83)

## CHART 5

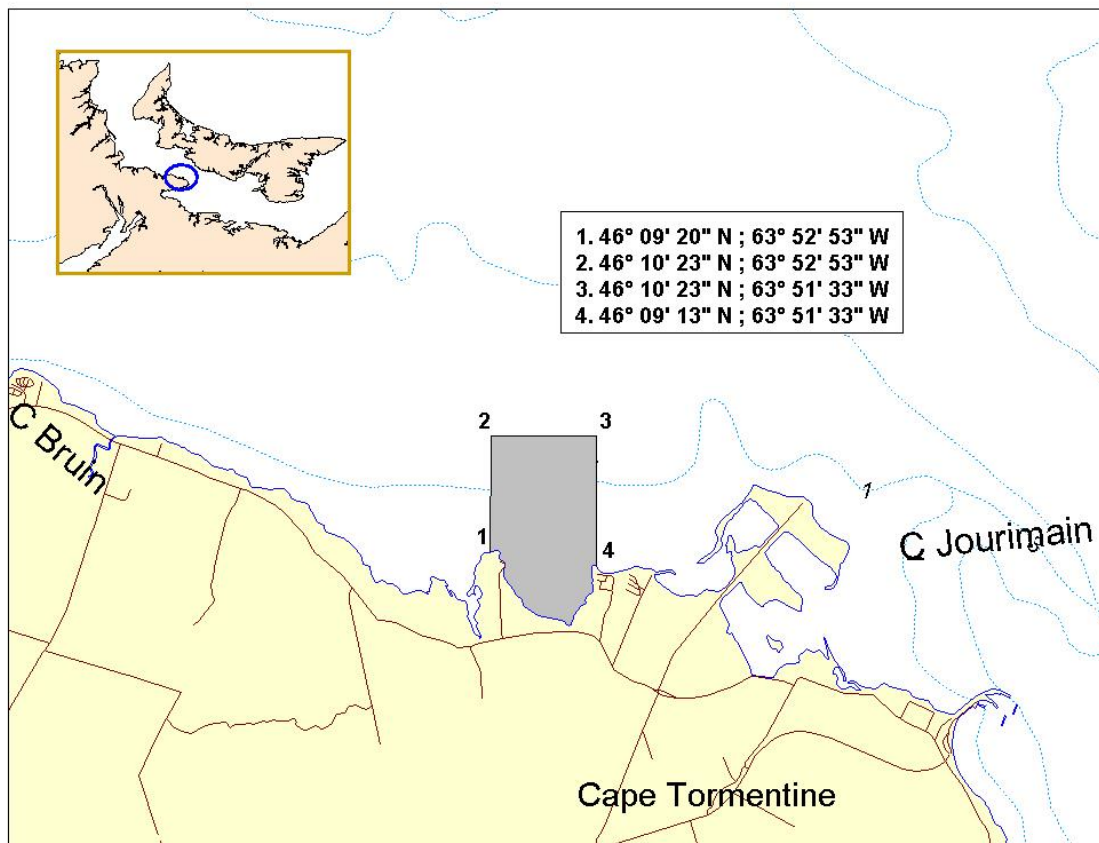
### Closure of the spring commercial fishery on a spawning bed near Point Escuminac (N.B.) in HFA 16C (Grey zone)



Note: These reference points are based on the geodesic system North American Datum 1983 (NAD83)

## CHART 6

### Closure of the spring commercial fishery on a spawning bed near Cape Jourimain (N.B.) in HFA 16E (Grey zone)



Note: These reference points are based on the geodesic system North American Datum 1983 (NAD83)

## **Annex 1**

### **Spring Herring Reserve Distribution Rules for the 2019 Sharing Plan**

1. Each HFA will maintain its existing quota share at the end of the sharing plan.
2. Establishment of a 476 t reserve taken by removing 250 t from the top of the total inshore quota before distribution to HFAs according to actual shares and by removing 5 t of the HFA 16A, 148 t of the HFA 16C, 53 t of the HFA 16D, 12 t of the HFA 16F and 8 t of the HFA 16G allocations (Bringing those HFA's to their 2007 catch level).
3. All HFAs will have access to the reserve when their initial allocation has been caught before June 1.
4. On June 1, uncaught area quotas and remaining reserve are transferred to the June 1-30 quota. Starting on June 1, any fisher may fish against the HFA 16A-G, June 1-30 quota.
5. The spring inshore fishery will be closed if the total inshore quota is caught.

**Annex 1 (continued)**

**SPRING - SHARE SCENARIO BASED ON ESTABLISHMENT OF A RESERVE**

(2019 REFERENCE FIXED GEAR QUOTA = 961 t) *TAC 1,250 t*

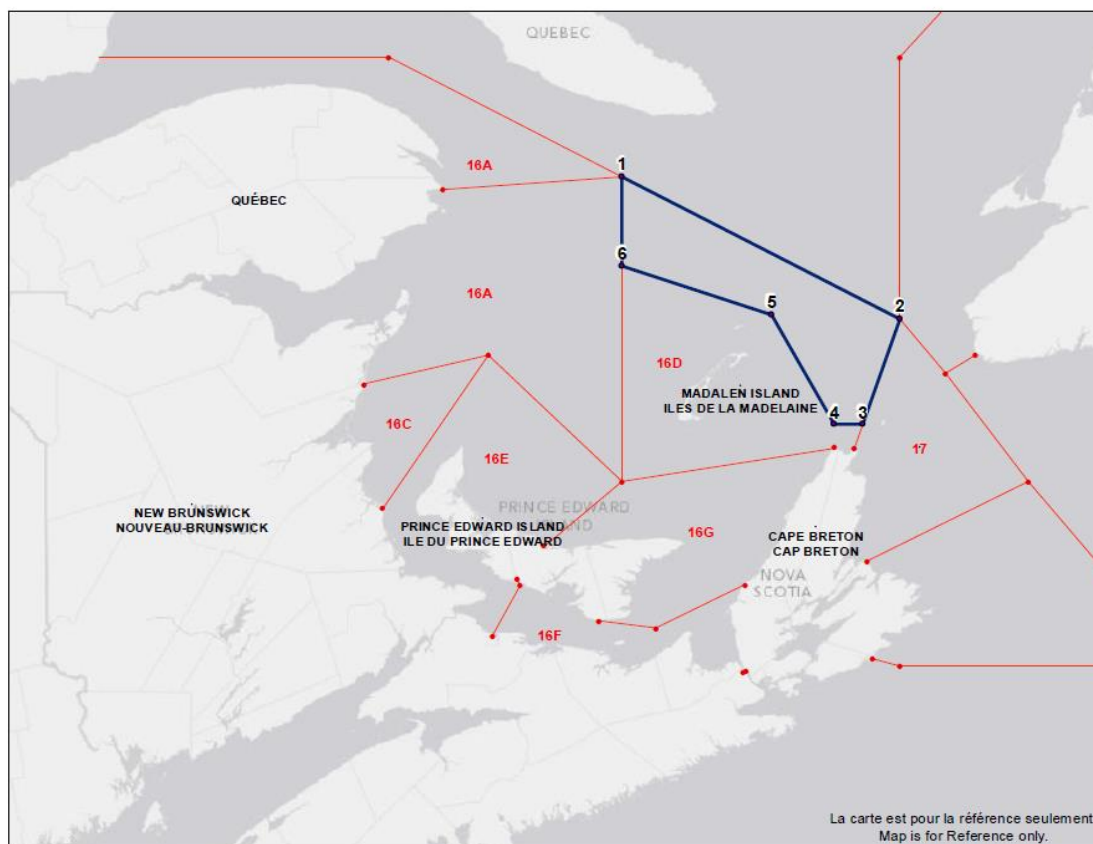
HFA	CURRENT SHARE	Quota based on current shares	Quota after deduction from HFA 16A, C, D, F, G	Initial Allocation	Rules for accessing the reserve / (476 t)
16A	1.03%	10	2	2	Total catches prior to May 31 no higher than original share (12 t) /
16B	6.36%	61	45	45	50 t increments to the level of 2007 catches (471 t) /
16C	32.60%	313	84	84	50 t increments to the level of original share (365 t) /
16D	9.54%	92	15	15	50 t increments to the level of original share (107 t) /
16E	40.56%	390	288	288	50 t increments to the level of 2007 catches (815 t) /
16F	2.39%	23	5	5	Total catches prior to May 31 no higher than original share (27 t) /
16G	2.01%	19	6	6	Total catches prior to May 31 no higher than original share (23 t) /
16A-G (June 1-30 )	5.50%	53	39	39	100% of remaining reserve and unused area allocations after June 1 /
17		10	10	10	final
<b>TOTAL</b>	<b>100%</b>	<b>961</b>	<b>485</b>	<b>485</b>	

## **Annex 2**

### **Large Purse Seine Fleet Fishery on “the Edge” (4T)**

- All Gulf large purse seine licence holders are authorized to conduct fishing activities in the spring on the Edge of 4T (Chart 7). This herring fishery targets fall origins spawners
- The large purse seine fleet is authorized to fish their fall herring quota along the Edge in 4T during the spring season (May-June). Catches will be counted towards this quota.
- All vessels must be equipped with an operational Vessel Monitoring System during fishing activities.
- There will be 20% observer coverage at sea during the spring fishery along the Laurentian channel (“Edge fishery”).
- The maximum authorized by-catch of mackerel and capelin is set at 10% each of the directed species. The maximum authorized by-catch of groundfish is set at 5% of the directed species. Monitoring and sampling for by-catch species will be conducted at sea and the by-catch may be verified at dockside by fishery officers.
- A small fish protocol is in place to control the capture of juvenile herring during the purse seine fishery with a 100% dockside monitoring. The small fish protocol reduces the remaining available quota according to the percentage of herring smaller than 23.5 cm (fork length) in the catch.
- A scientific protocol has been developed to verify the spawning component of the herring caught. The proportion of spring and fall spawners in the catch will be determined by DFO. If at any time the amount of spring spawners in the catch reaches the spring allocation, the purse seine fishery will be closed until July 1.

**Chart 7: Area where the large purse seine fleet « Edge » fishery will occur (area in blue).**



Points	Latitude North	Longitude West
1.	48°42'00"N	62°32'00"W
2.	47°50'00"N	60°00'00"W
3.	47°11'06"N	60°20'07"W
4.	47°11'06"N	60°35'52"W
5.	47°51'33"N	61°10'07"W
6.	48°09'33"N	62°32'02"W

Note: When the geographic boundary of an area is expressed in Latitude and Longitude, these point references are based on the geodesic system North American Datum 1927 (NAD27)