



*Gulf Region*

---

# *Notice to Fish Harvesters*

---

## NOTICE OF FISHERIES CLOSURES: PRESENCE OF NORTH ATLANTIC RIGHT WHALE

**Moncton, NB – October 30, 2019** – Fisheries and Oceans Canada (DFO) – Gulf Region is providing a notice of new temporary fisheries closures of a fishing area due to the presence of North Atlantic Right Whales (NARW).

As per the Dynamic fisheries management protocol, grid **HD52** from the 20 fathoms shallow water protocol line towards deeper waters will be closed **November 3, 2019 at 5:00 p.m.** Atlantic Standard Time (AST).

DFO is providing a **96 hours** advanced notice of a fishery closure. All non-tended gear must be removed from the closed area before the date and the time of closure.

As previously announced, grids **HD51**(portion), **HE52**, **HF52** and **HG52** will be closing on **October 31, 2019** at 5:00 p.m. Atlantic Daylight Time (ADT).

Please note that the following grids remain closed:

- Full grids: GV41, GV42, GW39, GW40, GW41, GW42, GX41, GX42, GY38, GY40, GY41, GY42, GZ38, GZ40, GZ41, GZ42, HA38, HA39, HA40, HA41, HA42, HB40, HB41, HB42, HB43, HC40, HC41, HC42, HC43, HC44, HC45, HD41, HD42, HD43, HD44, HD45, HE40, HE41, HE42, HE43, HE44, HE45, HE46, HE47, HE48, HE49, HF41, HF42, HF43, HF44, HF45, HF46, HF47, HF48, HF49, HF50, HF51, HG51; and
- Portions of grids: HD48, HD49, HD50, HE50, HE51, HF40, HG40, HG41, HG42, HG43, HG44, HG45, HG47, HG48, HG49 and HG50.

The closures will remain in effect until further notice. In the event that areas are reopened, DFO will inform industry prior to their reopening.

The closures will be in effect for the following fisheries where the fishing seasons are currently opened: snow crab, toad crab, rock crab, lobster, whelk, Greenland halibut (fixed gear) and winter flounder (fixed gear). Closures will also be in effect for Atlantic halibut (fixed gear), mackerel (gillnet) and herring (gillnet) when gear is left unattended.

DFO asks licence holders to be vigilant during fishing activities concerning the presence of North Atlantic Right Whales. Furthermore, please be reminded that it is the responsibility of the licence holder to take into account the marine safety notices issued, amongst others, by Environment and Climate Change Canada and Transport Canada, as well as the standards and best practices in marine safety, and to take all measures to ensure safe fishing operations. .../2

The coordinates representing the contour of the **closed static area** are listed below:

Points	Position	
	North Latitude	West Longitude
<b>1</b>	48° 20' 0" N	63° 50' 0" W
<b>2</b>	47° 40' 0" N	63° 50' 0" W
<b>3</b>	47° 40' 0" N	64° 00' 0" W
<b>4</b>	47° 30' 0" N	64° 00' 0" W
<b>5</b>	47° 30' 0" N	64° 20' 0" W
<b>6</b>	47° 50' 0" N	64° 20' 0" W
<b>7</b>	48° 00' 0" N	64° 10' 0" W
<b>8</b>	48° 10' 0" N	64° 10' 0" W
<b>9</b>	48° 10' 0" N	64° 00' 0" W
<b>10</b>	48° 20' 0" N	64° 00' 0" W
<b>11</b>	48° 20' 0" N	63° 50' 0" W

Area enclosed by rhumb lines (similar to straight lines plotted on a nautical chart) joining the points listed above in the order they are listed. Point references are based on the geodesic system North American Datum 1983 (NAD83). Positions are expressed in degrees, minutes and seconds.

The coordinates representing the contour of the **Fisheries dynamic management protocol** (the large area east of between New Brunswick and the Magdalen Islands from the 20 fathoms shallow water protocol line to deeper waters) are listed below:

Points	Positions	
	North Latitude	West Longitude
<b>1</b>	48° 30' 0.0" N	63° 00' 0.0" W
<b>2</b>	47° 30' 0.0" N	63° 00' 0.0" W
<b>3</b>	47° 30' 0.0" N	62° 50' 0.0" W
<b>4</b>	47° 20' 0.0" N	62° 50' 0.0" W
<b>5</b>	47° 20' 0.0" N	62° 30' 0.0" W
<b>6</b>	47° 00' 0.0" N	62° 30' 0.0" W
<b>7</b>	47° 00' 0.0" N	62° 10' 0.0" W
<b>8</b>	47° 07' 30.0" N	62° 10' 0.0" W
<b>9</b>	47° 03' 0.0" N	61° 52' 0.0" W
<b>10</b>	46° 58' 0.0" N	61° 46' 0.0" W
<b>11</b>	47° 00' 0.0" N	61° 38' 0.0" W
<b>12</b>	47° 00' 48.0" N	61° 30' 0.0" W
<b>13</b>	47° 01' 0.0" N	61° 28' 0.0" W
<b>14</b>	47° 10' 0.0" N	61° 23' 30.0" W
<b>15</b>	47° 10' 0.0" N	61° 20' 0.0" W
<b>16</b>	46° 30' 0.0" N	61° 20' 0.0" W
<b>17</b>	46° 30' 0.0" N	61° 45' 0.0" W
<b>18</b>	46° 33' 0.0" N	62° 10' 0.0" W
<b>19</b>	46° 33' 0.0" N	62° 20' 0.0" W
<b>20</b>	46° 40' 0.0" N	62° 20' 0.0" W

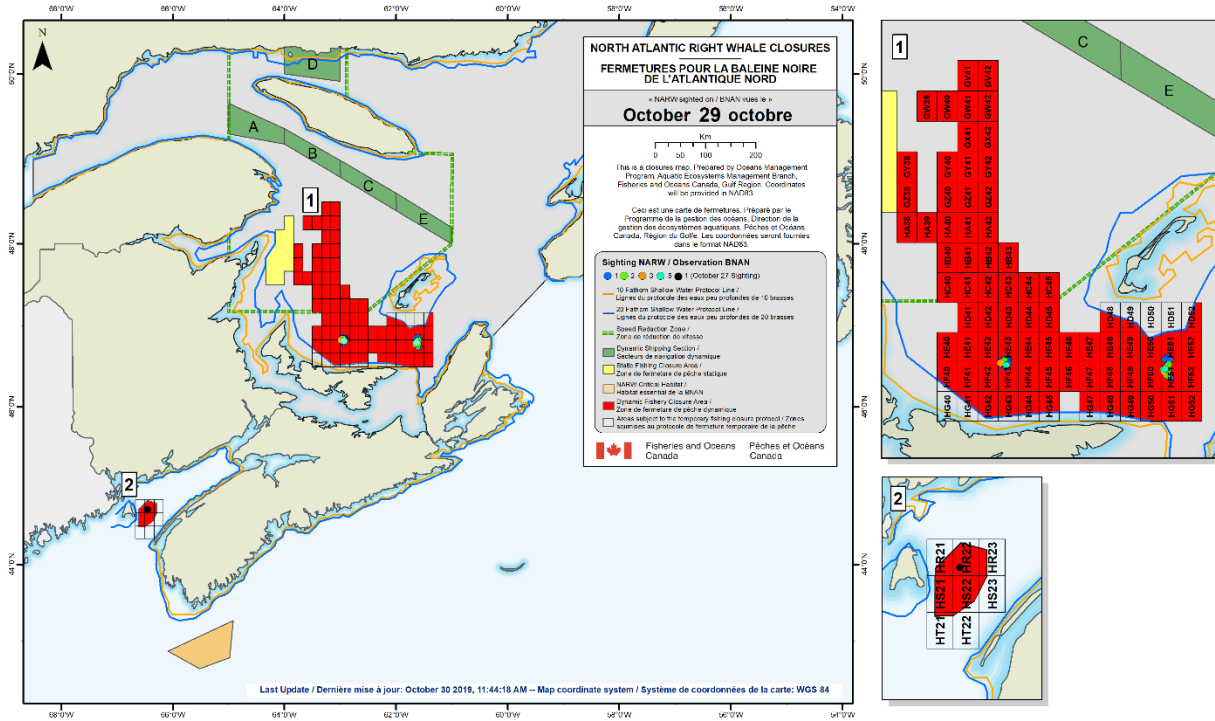
.../3

Points	Position	
	North Latitude	West Longitude
21	46° 40' 0.0" N	62° 30' 0.0" W
22	46° 33' 0.0" N	62° 30' 0.0" W
23	46° 33' 0.0" N	62° 34' 0.0" W
24	46° 31' 0.0" N	63° 06' 0.0" W
25	46° 43' 55.4" N	63° 30' 0.0" W
26	47° 00' 0.0" N	63° 30' 0.0" W
27	47° 00' 0.0" N	63° 20' 0.0" W
28	47° 10' 0.0" N	63° 20' 0.0" W
29	47° 10' 0.0" N	63° 30' 0.0" W
30	47° 30' 0.0" N	63° 30' 0.0" W
31	47° 30' 0.0" N	63° 50' 0.0" W
32	48° 00' 0.0" N	63° 50' 0.0" W
33	48° 00' 0.0" N	63° 40' 0.0" W
34	47° 40' 0.0" N	63° 40' 0.0" W
35	47° 40' 0.0" N	63° 30' 0.0" W
36	48° 00' 0.0" N	63° 30' 0.0" W
37	48° 00' 0.0" N	63° 20' 0.0" W
38	48° 10' 0.0" N	63° 20' 0.0" W
39	48° 10' 0.0" N	63° 40' 0.0" W
40	48° 20' 0.0" N	63° 40' 0.0" W
41	48° 20' 0.0" N	63° 20' 0.0" W
42	48° 30' 0.0" N	63° 20' 0.0" W
43	48° 30' 0.0" N	63° 00' 0.0" W

*Area enclosed by rhumb lines (similar to straight lines plotted on a nautical chart) joining the points listed above in the order they are listed. Point references are based on the geodesic system North American Datum 1983 (NAD83). Positions are expressed in degrees, minutes and seconds.*

.../4

Map identifying the grid closures in the Southern Gulf of St. Lawrence due to the presence of NARW.



**FOR MORE INFORMATION:**

Regular updates and maps indicating sightings will be posted at the following address:

<http://dfo-mpo.gc.ca/species-especes/mammals-mammiferes/narightwhale-baleinenoirean/alert-alerte/index-eng.html>