



Presentation

Weather and Ice

**Snow Crab Fishery
Opening**
Gulf of St. Lawrence

Friday, March 20, 2026

Présentation

météo et glace

***Ouverture de la pêche au
crabe des neiges***
Golfe du Saint-Laurent

vendredi, 20 mars 2026



Purpose

This presentation has been prepared by the Canadian Ice Service for briefing purposes only.

All information presented herewith must not be used for navigational purposes.

The content must not be further distributed.

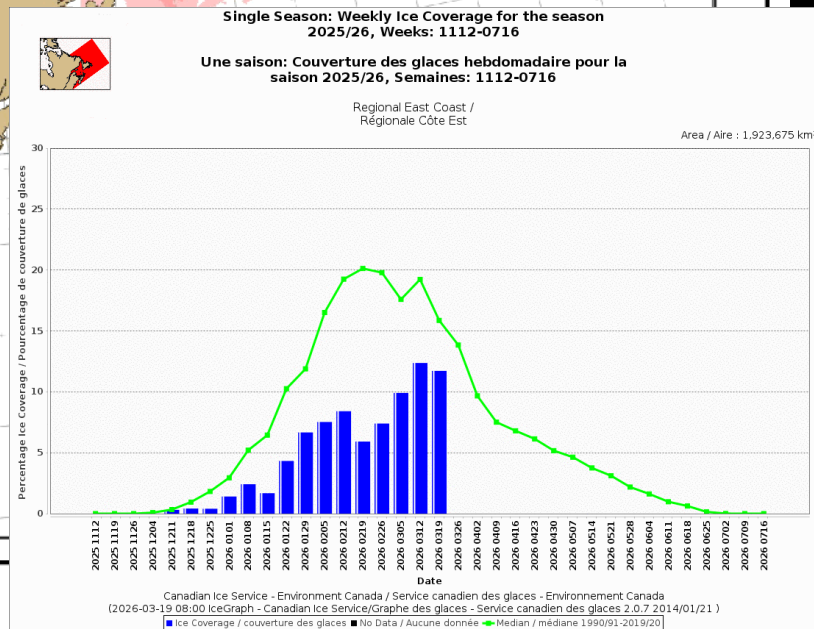
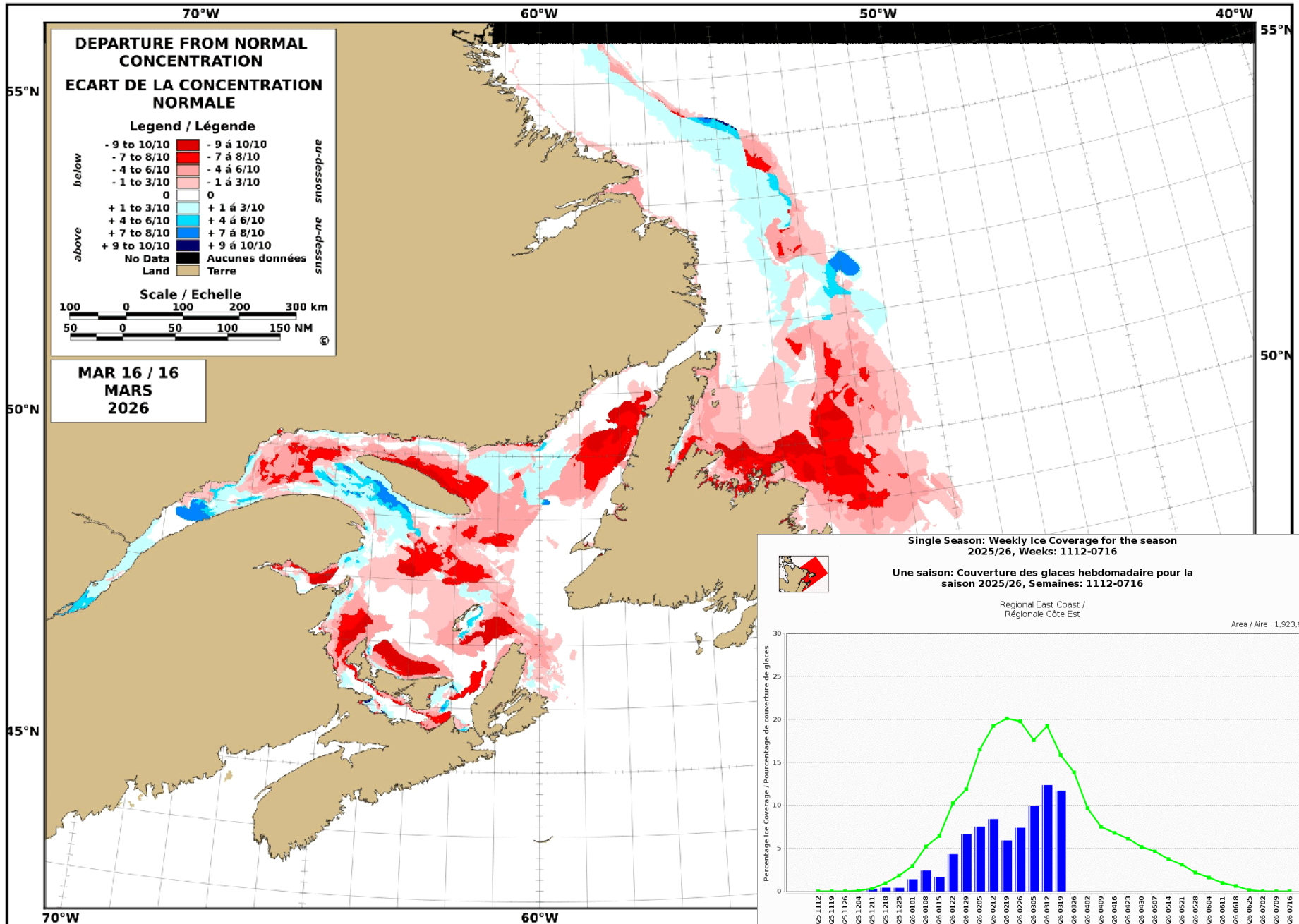
But

Cette présentation a été préparée par le Service canadien des glaces à des fins d'information seulement.

Toutes les informations présentées ici ne doivent pas être utilisées à des fins de navigation.

Ce contenu ne doit pas être diffusé.





ICE CHART CARTE DES GLACES

Gulf of St. Lawrence
Golfe du Saint-Laurent

V 1800 Z
19 MAR/MAR 2026

Based On/Basée sur:

RCM 19/10Z Gulf/Golfe

GOES 19/14Z Gulf/Golfe NE
A few clouds / quelques nuages

GOES 19/14Z Northumberland
btw/entre LON 61W 62W

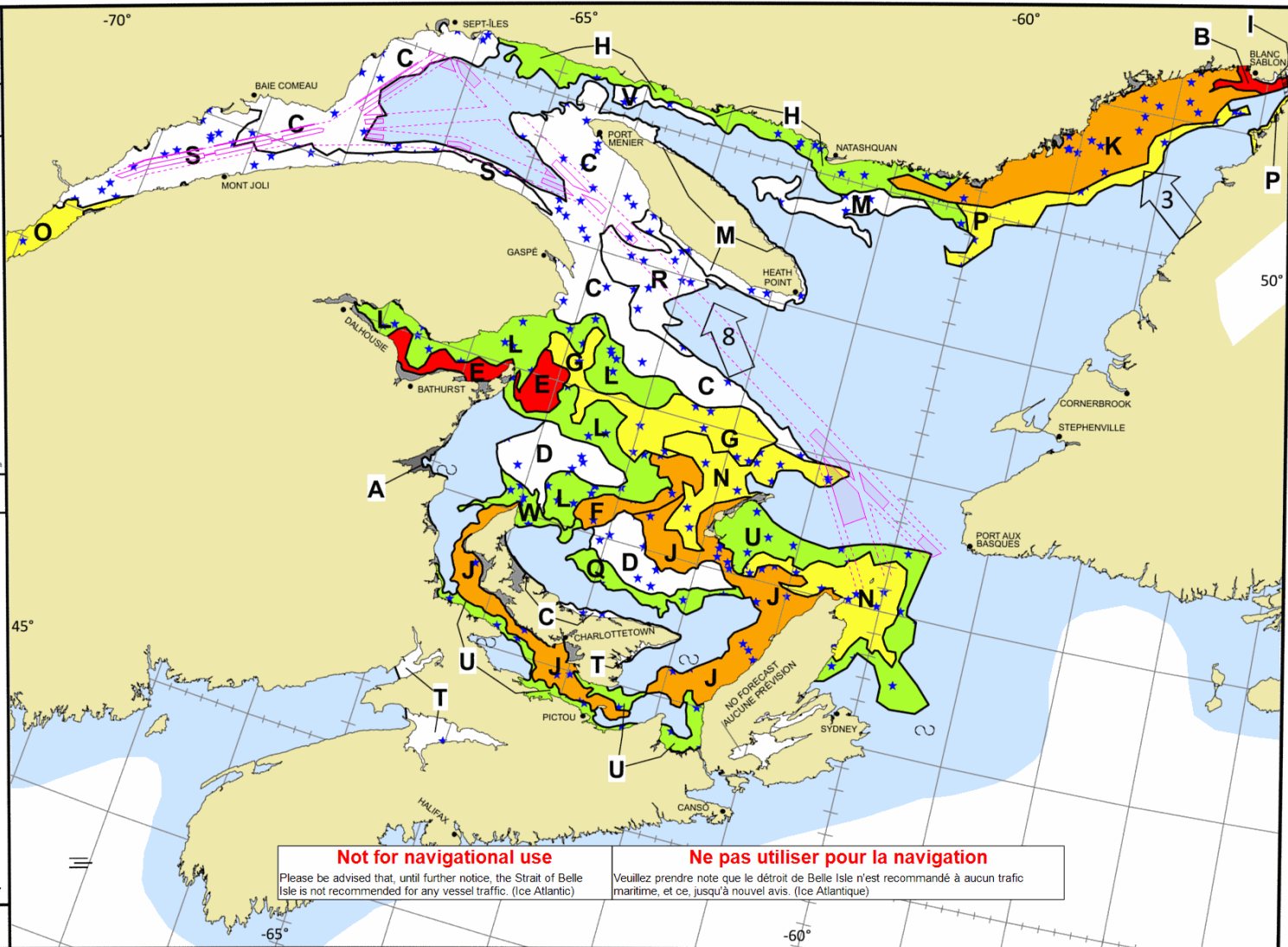
Ship/Navire 19/12Z CGHL #047
St. of Belle Isle

© 2026 CANADIAN ICE SERVICE
SERVICE CANADIEN DES GLACES
Environment and Environment
Climata Change Canada Changement climatique Canada

CIS Standard Colour Code
Code de couleurs standard du SCG

- Ice free / Libre de glace
 - Open water / Eau libre or Bergy water / Eau bergée
 - Fast ice / Banquise côtière
 - Ice thickness / Épaisseur de glace < 15 cm**
 - Predominance of ice / Prédominance de glace < 10 cm
 - Predominance of ice / Prédominance de glace 10 - 15 cm
 - Ice thickness / Épaisseur de glace > 15 cm**
 - 1/10 - 3/10
 - 4/10 - 6/10
 - 7/10 - 8/10
 - 9/10 - 10/10
 - Presence of Old Ice / Présence de vieille glace**
 - 1/10 - 4/10
 - 5/10 - 10/10
- Source: MANICE Chap. 3.7

NM/Day Local Drift Next 24h
MN/Jour Dérive Locale Prochain 24h

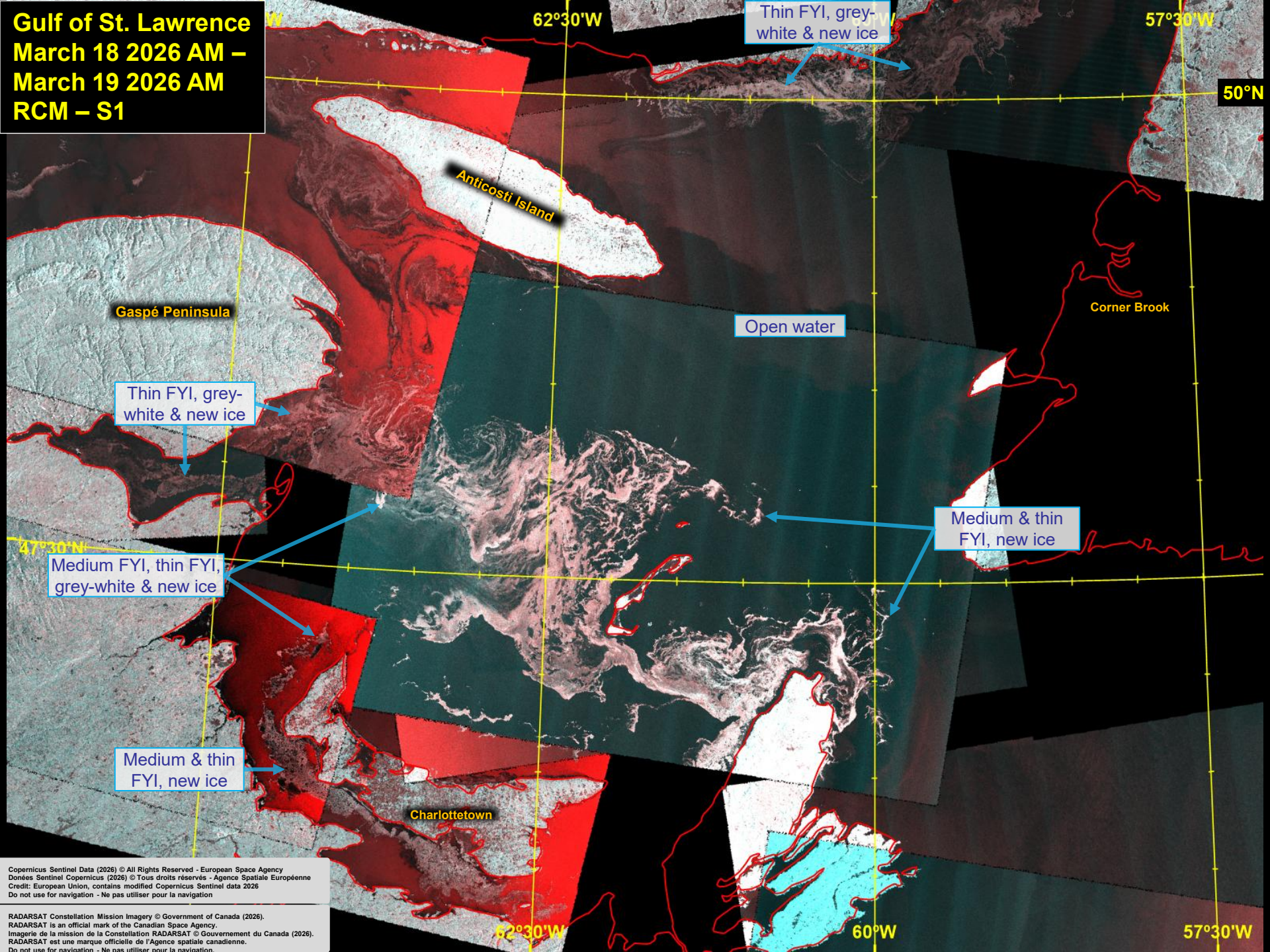


Not for navigational use
Please be advised that, until further notice, the Strait of Belle Isle is not recommended for any vessel traffic. (Ice Atlantic)

Ne pas utiliser pour la navigation
Veuillez prendre note que le détroit de Belle Isle n'est recommandé à aucun trafic maritime, et ce, jusqu'à nouvel avis. (Ice Atlantique)

A	<table border="1"><tr><td>10</td></tr><tr><td>7</td></tr><tr><td>8</td></tr></table>	10	7	8	B	<table border="1"><tr><td>9+</td></tr><tr><td>6 4</td></tr><tr><td>7 5</td></tr><tr><td>4 4</td></tr></table>	9+	6 4	7 5	4 4	C	<table border="1"><tr><td>9</td></tr><tr><td>1</td></tr><tr><td>X</td></tr></table>	9	1	X	D	<table border="1"><tr><td>9</td></tr><tr><td>1</td></tr><tr><td>X</td></tr></table>	9	1	X	E	<table border="1"><tr><td>9</td></tr><tr><td>5 4</td></tr><tr><td>7 5</td></tr><tr><td>5 4</td></tr></table>	9	5 4	7 5	5 4	F	<table border="1"><tr><td>9</td></tr><tr><td>4 3 2</td></tr><tr><td>7 5 1</td></tr><tr><td>5 4 X</td></tr></table>	9	4 3 2	7 5 1	5 4 X	G	<table border="1"><tr><td>9</td></tr><tr><td>3 2 4</td></tr><tr><td>7 5 1</td></tr><tr><td>3 3 X</td></tr></table>	9	3 2 4	7 5 1	3 3 X	H	<table border="1"><tr><td>9</td></tr><tr><td>2 7</td></tr><tr><td>5 1</td></tr><tr><td>3 X</td></tr></table>	9	2 7	5 1	3 X	I	<table border="1"><tr><td>9</td></tr><tr><td>2 7</td></tr><tr><td>4 1</td></tr><tr><td>3 X</td></tr></table>	9	2 7	4 1	3 X	J	<table border="1"><tr><td>9</td></tr><tr><td>2 6 1</td></tr><tr><td>1-7 1</td></tr><tr><td>5 5 X</td></tr></table>	9	2 6 1	1-7 1	5 5 X	K	<table border="1"><tr><td>9</td></tr><tr><td>1 6 2</td></tr><tr><td>7 5 1</td></tr><tr><td>4 4 X</td></tr></table>	9	1 6 2	7 5 1	4 4 X	L	<table border="1"><tr><td>9</td></tr><tr><td>1 1 7</td></tr><tr><td>7 5 1</td></tr><tr><td>3 3 X</td></tr></table>	9	1 1 7	7 5 1	3 3 X	M	<table border="1"><tr><td>7</td></tr><tr><td>1</td></tr><tr><td>X</td></tr></table>	7	1	X	N	<table border="1"><tr><td>7</td></tr><tr><td>2 3 2</td></tr><tr><td>1-7 1</td></tr><tr><td>4 3 X</td></tr></table>	7	2 3 2	1-7 1	4 3 X
10																																																																															
7																																																																															
8																																																																															
9+																																																																															
6 4																																																																															
7 5																																																																															
4 4																																																																															
9																																																																															
1																																																																															
X																																																																															
9																																																																															
1																																																																															
X																																																																															
9																																																																															
5 4																																																																															
7 5																																																																															
5 4																																																																															
9																																																																															
4 3 2																																																																															
7 5 1																																																																															
5 4 X																																																																															
9																																																																															
3 2 4																																																																															
7 5 1																																																																															
3 3 X																																																																															
9																																																																															
2 7																																																																															
5 1																																																																															
3 X																																																																															
9																																																																															
2 7																																																																															
4 1																																																																															
3 X																																																																															
9																																																																															
2 6 1																																																																															
1-7 1																																																																															
5 5 X																																																																															
9																																																																															
1 6 2																																																																															
7 5 1																																																																															
4 4 X																																																																															
9																																																																															
1 1 7																																																																															
7 5 1																																																																															
3 3 X																																																																															
7																																																																															
1																																																																															
X																																																																															
7																																																																															
2 3 2																																																																															
1-7 1																																																																															
4 3 X																																																																															
O	<table border="1"><tr><td>7</td></tr><tr><td>2 2 3</td></tr><tr><td>7 5 1</td></tr><tr><td>3 3 X</td></tr></table>	7	2 2 3	7 5 1	3 3 X	P	<table border="1"><tr><td>7</td></tr><tr><td>1 4 2</td></tr><tr><td>7 5 1</td></tr><tr><td>4 4 X</td></tr></table>	7	1 4 2	7 5 1	4 4 X	Q	<table border="1"><tr><td>7</td></tr><tr><td>1 1 5</td></tr><tr><td>1-7 1</td></tr><tr><td>4 3 X</td></tr></table>	7	1 1 5	1-7 1	4 3 X	R	<table border="1"><tr><td>5</td></tr><tr><td>1</td></tr><tr><td>X</td></tr></table>	5	1	X	S	<table border="1"><tr><td>3</td></tr><tr><td>1</td></tr><tr><td>X</td></tr></table>	3	1	X	T	<table border="1"><tr><td>3</td></tr><tr><td>1</td></tr><tr><td>X</td></tr></table>	3	1	X	U	<table border="1"><tr><td>3</td></tr><tr><td>1 2</td></tr><tr><td>7 1</td></tr><tr><td>4 X</td></tr></table>	3	1 2	7 1	4 X	V	<table border="1"><tr><td>3</td></tr><tr><td>1 2</td></tr><tr><td>4 1</td></tr><tr><td>3 X</td></tr></table>	3	1 2	4 1	3 X	W	<table border="1"><tr><td>2</td></tr><tr><td>1 1</td></tr><tr><td>7 1</td></tr><tr><td>3 X</td></tr></table>	2	1 1	7 1	3 X																													
7																																																																															
2 2 3																																																																															
7 5 1																																																																															
3 3 X																																																																															
7																																																																															
1 4 2																																																																															
7 5 1																																																																															
4 4 X																																																																															
7																																																																															
1 1 5																																																																															
1-7 1																																																																															
4 3 X																																																																															
5																																																																															
1																																																																															
X																																																																															
3																																																																															
1																																																																															
X																																																																															
3																																																																															
1																																																																															
X																																																																															
3																																																																															
1 2																																																																															
7 1																																																																															
4 X																																																																															
3																																																																															
1 2																																																																															
4 1																																																																															
3 X																																																																															
2																																																																															
1 1																																																																															
7 1																																																																															
3 X																																																																															

Gulf of St. Lawrence
March 18 2026 AM –
March 19 2026 AM
RCM – S1



62°30'W

Thin FYI, grey-white & new ice

57°30'W

50°N

Anticosti Island

Gaspé Peninsula

Open water

Corner Brook

Thin FYI, grey-white & new ice

Medium & thin FYI, new ice

Medium FYI, thin FYI, grey-white & new ice

Medium & thin FYI, new ice

Charlottetown

62°30'W

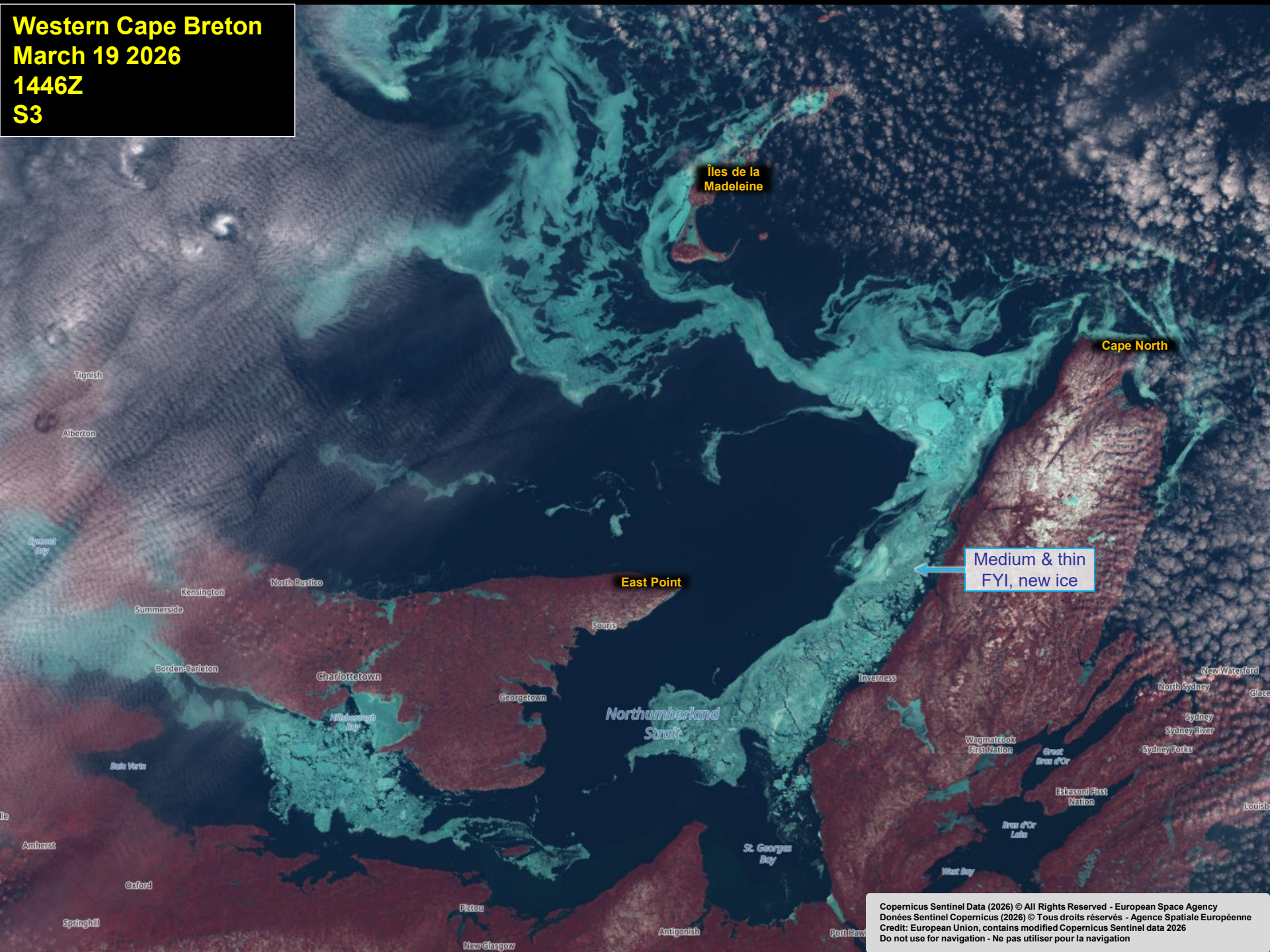
60°W

57°30'W

Copernicus Sentinel Data (2026) © All Rights Reserved - European Space Agency
Données Sentinel Copernicus (2026) © Tous droits réservés - Agence Spatiale Européenne
Credit: European Union, contains modified Copernicus Sentinel data 2026
Do not use for navigation - Ne pas utiliser pour la navigation

RADARSAT Constellation Mission Imagery © Government of Canada (2026).
RADARSAT is an official mark of the Canadian Space Agency.
Imagerie de la mission de la Constellation RADARSAT © Gouvernement du Canada (2026).
RADARSAT est une marque officielle de l'Agence spatiale canadienne.
Do not use for navigation - Ne pas utiliser pour la navigation

Western Cape Breton
March 19 2026
1446Z
S3



Îles de la Madeleine

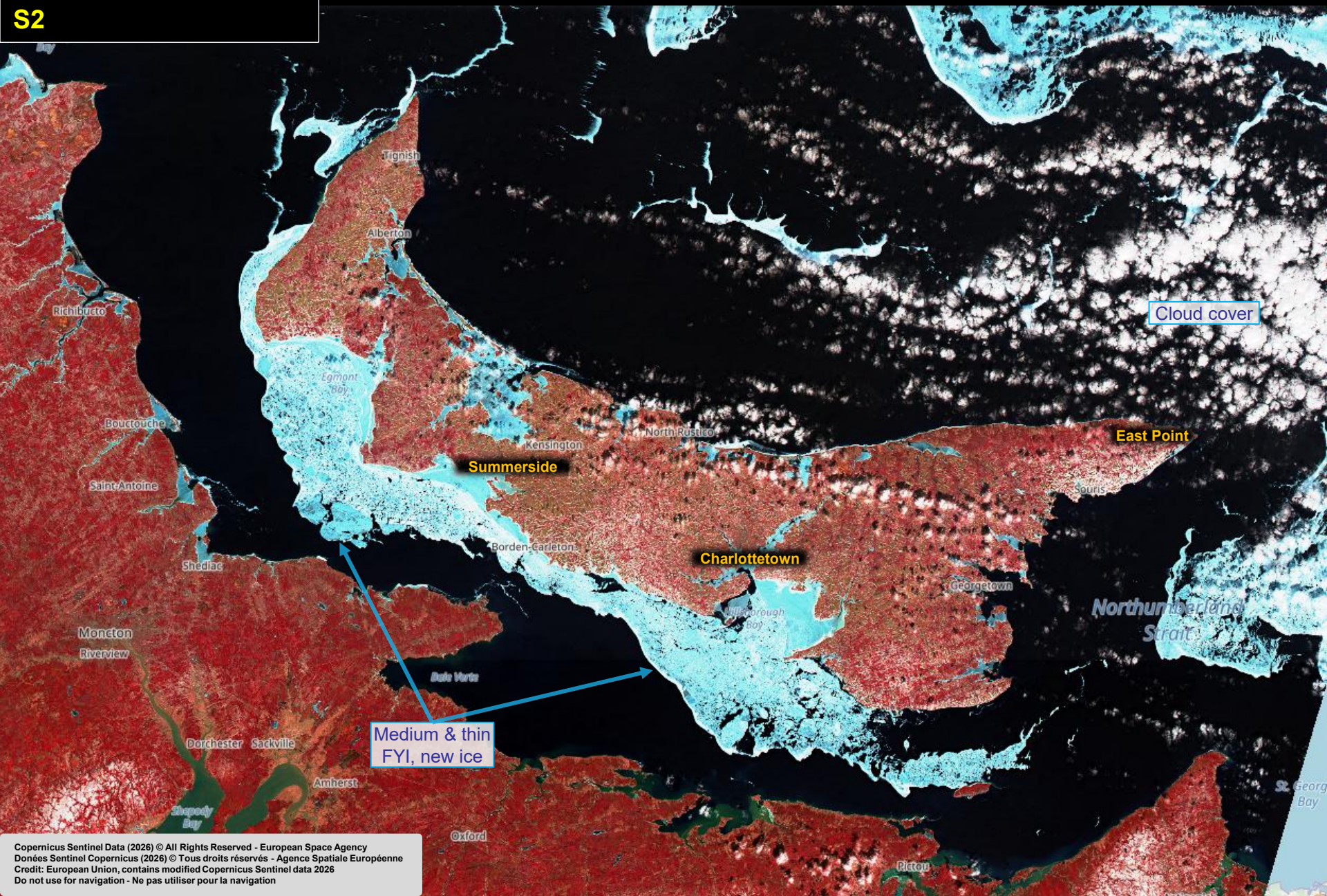
Cape North

East Point

Medium & thin FYI, new ice

Northumberland Strait

Northumberland Strait
March 18 2026
1516Z
S2



Medium & thin
FYI, new ice

Cloud cover

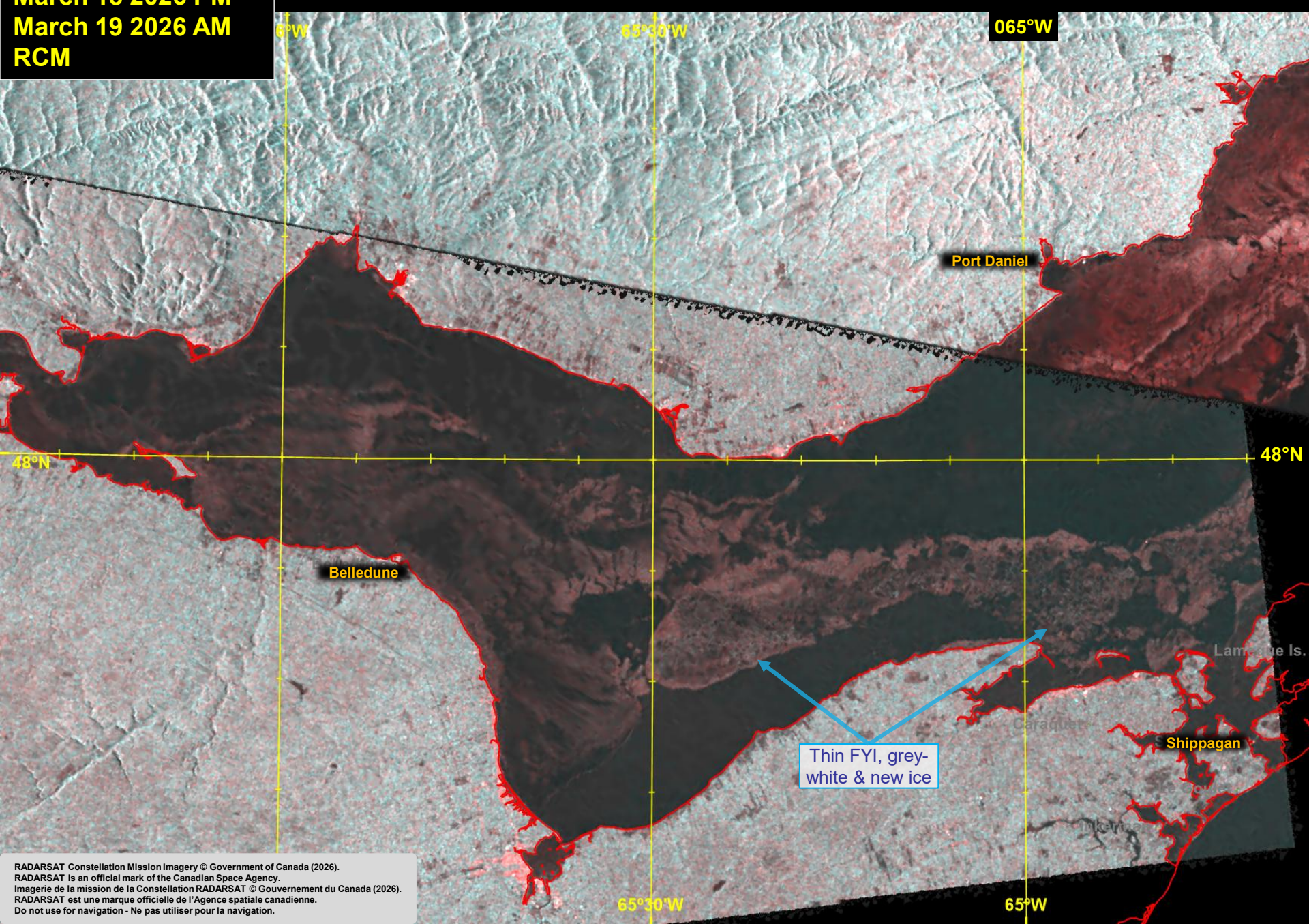
Summerside

Charlottetown

East Point

Northumberland
Strait

Baie-des-Chaleurs
March 18 2026 PM –
March 19 2026 AM
RCM



Thin FYI, grey-white & new ice

RADARSAT Constellation Mission Imagery © Government of Canada (2026).
RADARSAT is an official mark of the Canadian Space Agency.
Imagerie de la mission de la Constellation RADARSAT © Gouvernement du Canada (2026).
RADARSAT est une marque officielle de l'Agence spatiale canadienne.
Do not use for navigation - Ne pas utiliser pour la navigation.

Tendance journalière de température & prévision des vents - Daily Temperature Trend & Wind Forecast

En vigueur -> **2026-03-20** <- In Effect

		20-Mar	21-Mar		22-Mar		23-Mar		24-Mar		Normales Normals (°C)		Remarques Remarks
		Aujourd'hui Today	sam Sat		dim Sun		lun Mon		mar Tue				
		MAX	MIN	MAX	MIN	MAX	MIN	MAX	MIN	MAX	MIN	MAX	
Bathurst	°C	2	-4	0	-11	-1	-11	-6	-9	1	-7	1	
	kn	SW15↓LGT	N15↑N25		NW30↓LGT		NE20↑NE30		N30↑NW35				
Charlottetown	°C	4	0	2	-8	-2	-5	-3	-5	-4	-5	2	
	kn	S15-20	SE25↑NW30		NW30↓LGT		NE20↑NE30		N30↑NW35				
Halifax	°C	4	0	3	-7	1	-3	-1	-4	-1	-4	4	
	kn	LGT↑SW15	S20↑NW25		LGT↑SE20		NE25-35		NW25-30				
Channel-Port aux Basques	°C	-1	-4	0	-3	-4	-8	-2	-3	2	-6	2	
	kn	LGT↑S20	SE20-25 G40		NW35↓NW25		LGT↑NE30		N30↑NW35				WINTER STORM WATCH
Corner Brook	°C	-2	-6	0	-4	-3	-9	-3	-6	-2	-6	2	
	kn	LGT↑SW20	SE15-20		NW25-35		N15↑NE25		NE35-45				
St. Anthony	°C	-3	-10	-1	-3	-2	-12	-7	-14	-3	-9	-1	
	kn	E15↓LGT	S20↑SE25		SE20↑NW35		NW25↓VAR15		NE25-35				
Lewisporte	°C	-2	-6	1	-4	0	-9	-1	-5	4	-7	1	
	kn	NE15↓LGT	S20↑SE25		SE20↑NW35		NW25↓VAR15		NE25-35				
St. John's	°C	0	-7	0	-1	3	-8	-1	-4	3	-4	3	
	kn	NE20→NW20	SE15-20		VAR15↑W35		VAR20↑E25		S25-35				SPECIAL WX STATEMENT: SNOWFALL
Happy Valley Goose Bay	°C	-4	-8	-4	-13	-11	-21	-10	-28	-11	-13	-2	
	kn	LGT↑S15	SW15↑NE20		N15-20		SW15↓LGT		LGT				

> NORMAL(E) + 2°C

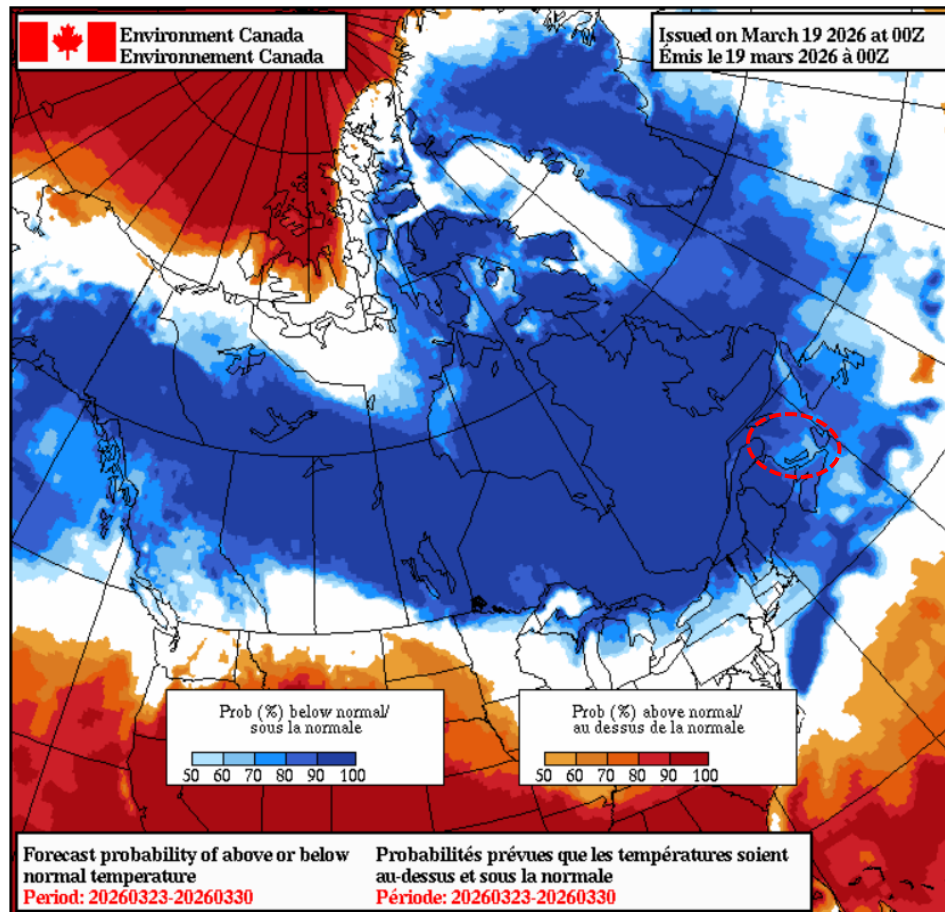
> NORMAL(E) + 5°C

NORMAL(E) ± 2°C

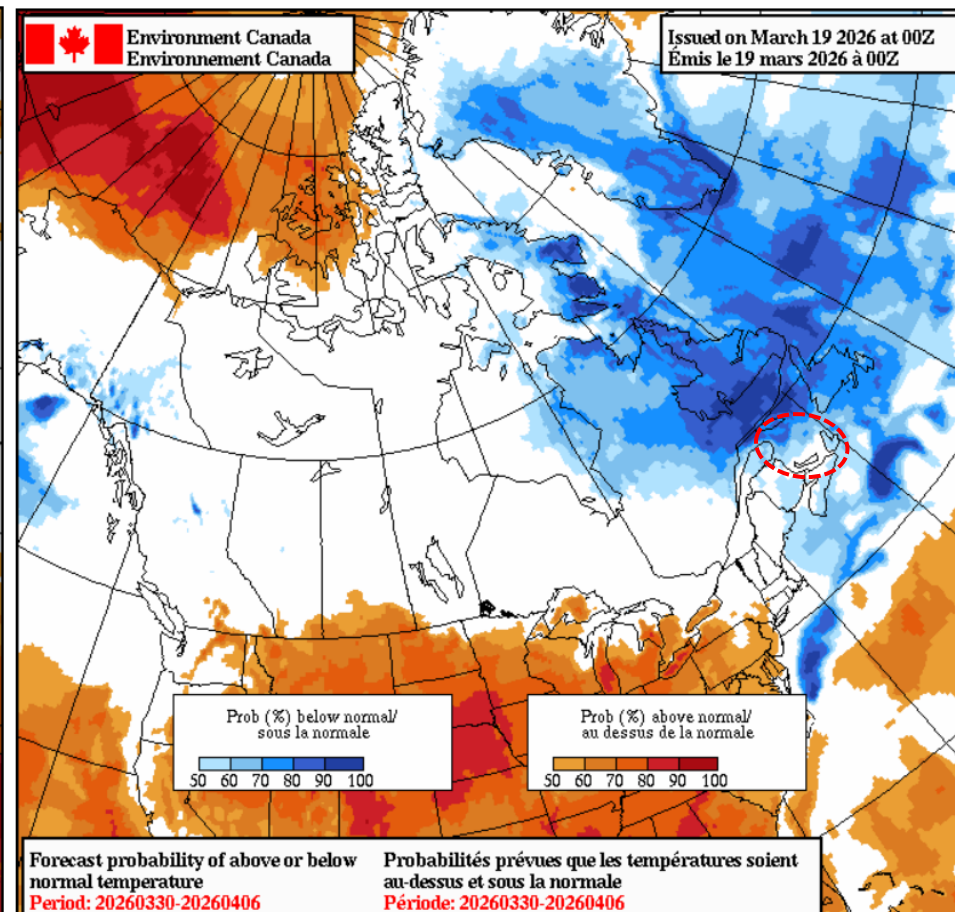
< NORMAL(E) - 2°C

< NORMAL(E) - 5°C

This table is a general summary - see <https://weather.gc.ca/> for official forecasts
Ce tableau est un résumé général - voir <https://meteo.gc.ca/> pour les prévisions officielles.



March 23 to 30
Du 23 au 30 mars

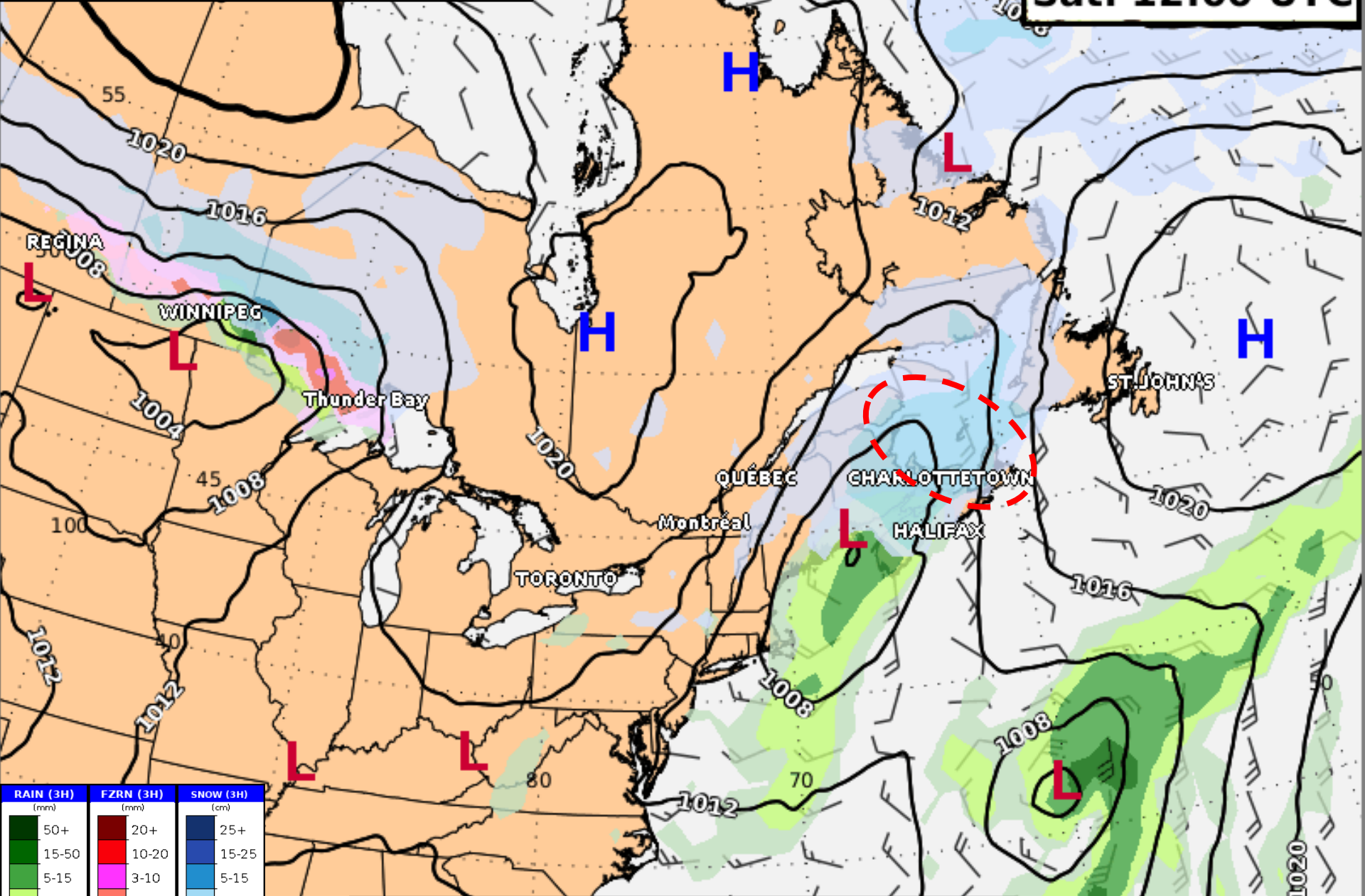


March 30 to April 6
Du 30 mars au 6 avril

Synoptic Prognosis & Precipitation

Pronostic synoptique et précipitations

Mar. 21 2026
Sat. 12:00 UTC



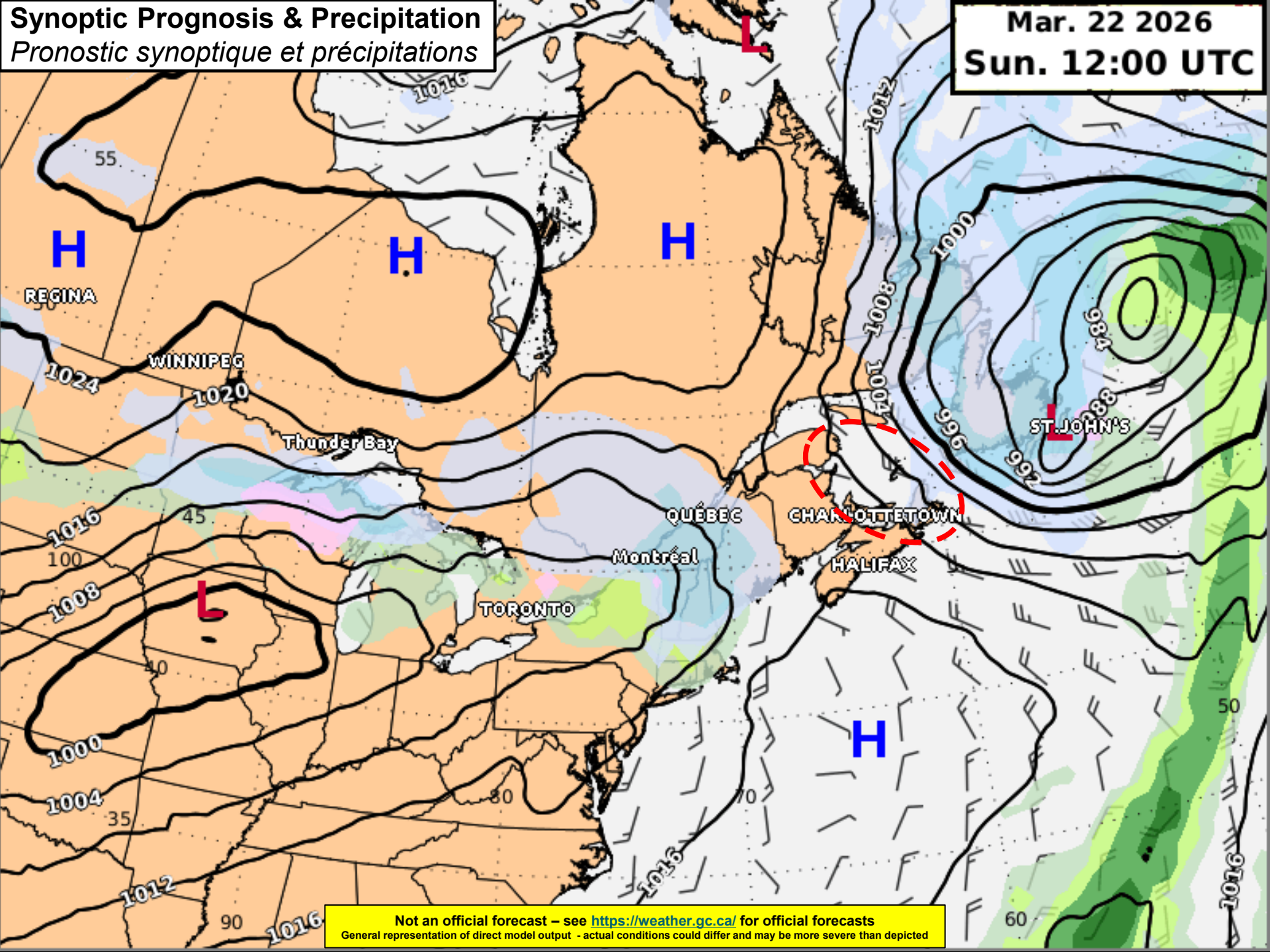
RAIN (3H) (mm)	FZRN (3H) (mm)	SNOW (3H) (cm)
50+	20+	25+
15-50	10-20	15-25
5-15	3-10	5-15
1-5	1-3	1-5
0.1-1	0.1-1	0.1-1

Not an official forecast – see <https://weather.gc.ca/> for official forecasts
General representation of direct model output - actual conditions could differ and may be more severe than depicted

Synoptic Prognosis & Precipitation

Pronostic synoptique et précipitations

Mar. 22 2026
Sun. 12:00 UTC

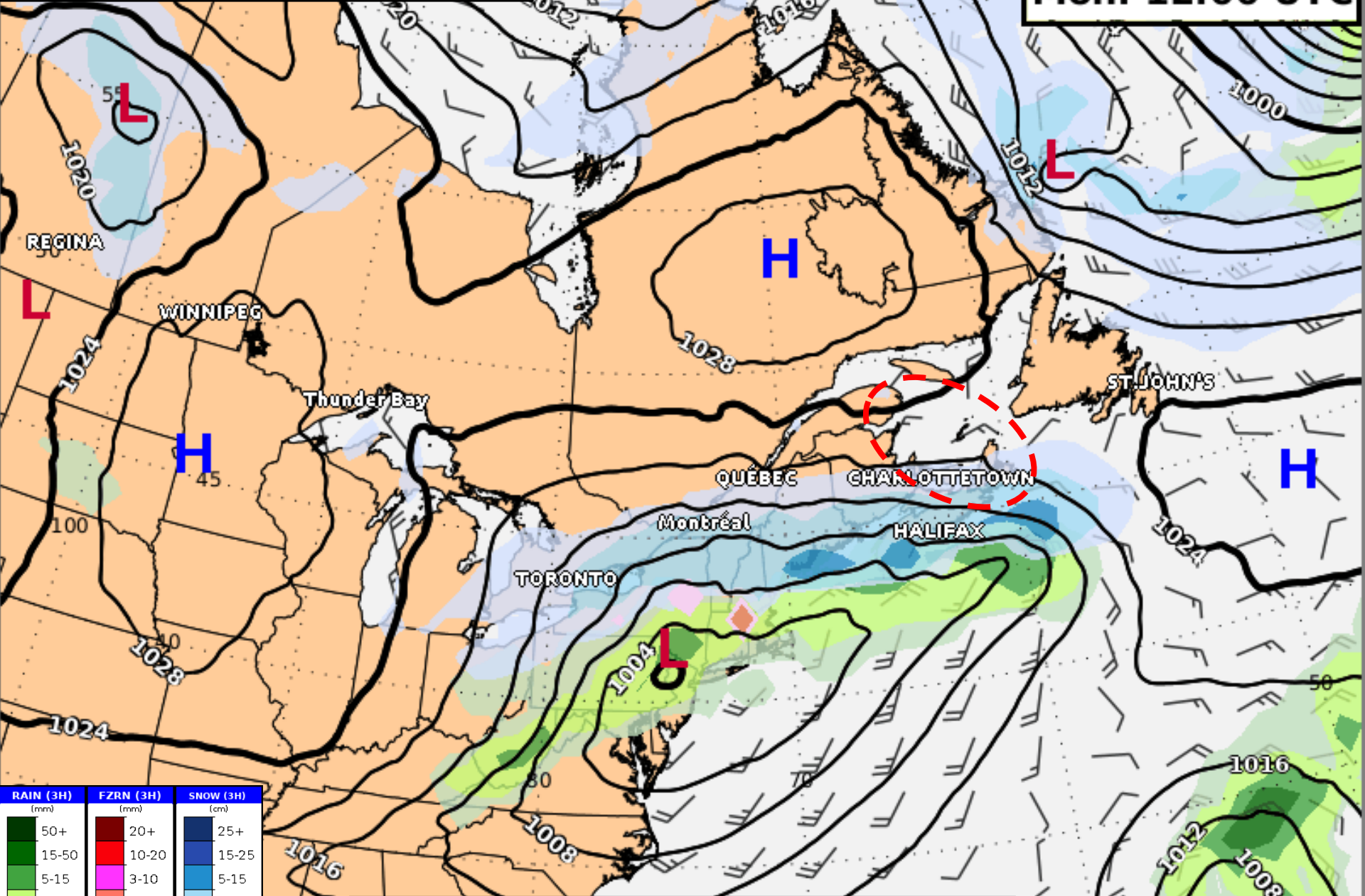


Not an official forecast – see <https://weather.gc.ca/> for official forecasts
General representation of direct model output - actual conditions could differ and may be more severe than depicted

Synoptic Prognosis & Precipitation

Pronostic synoptique et précipitations

Mar. 23 2026
Mon. 12:00 UTC

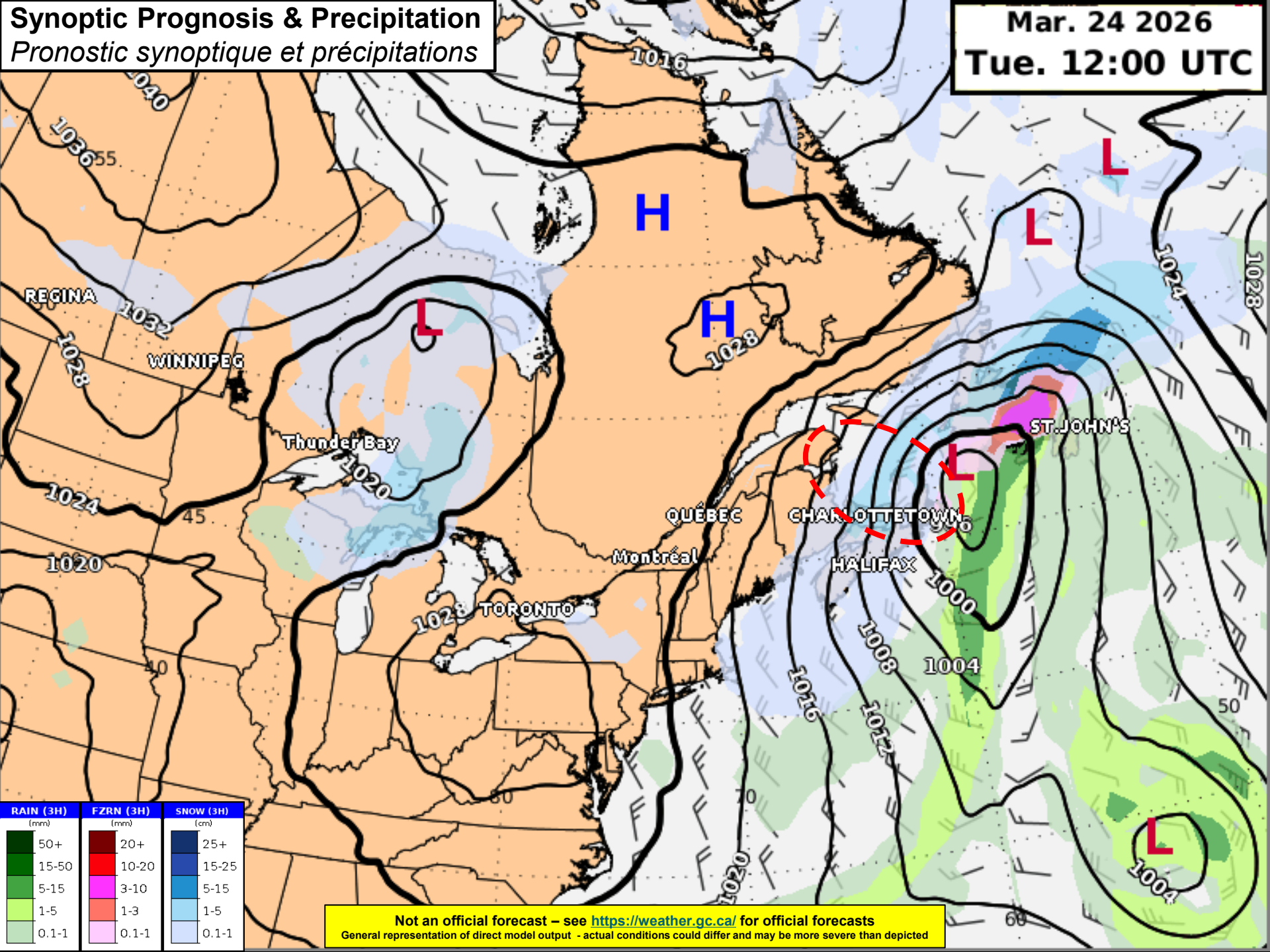


Not an official forecast – see <https://weather.gc.ca/> for official forecasts
General representation of direct model output - actual conditions could differ and may be more severe than depicted

Synoptic Prognosis & Precipitation

Pronostic synoptique et précipitations

Mar. 24 2026
Tue. 12:00 UTC



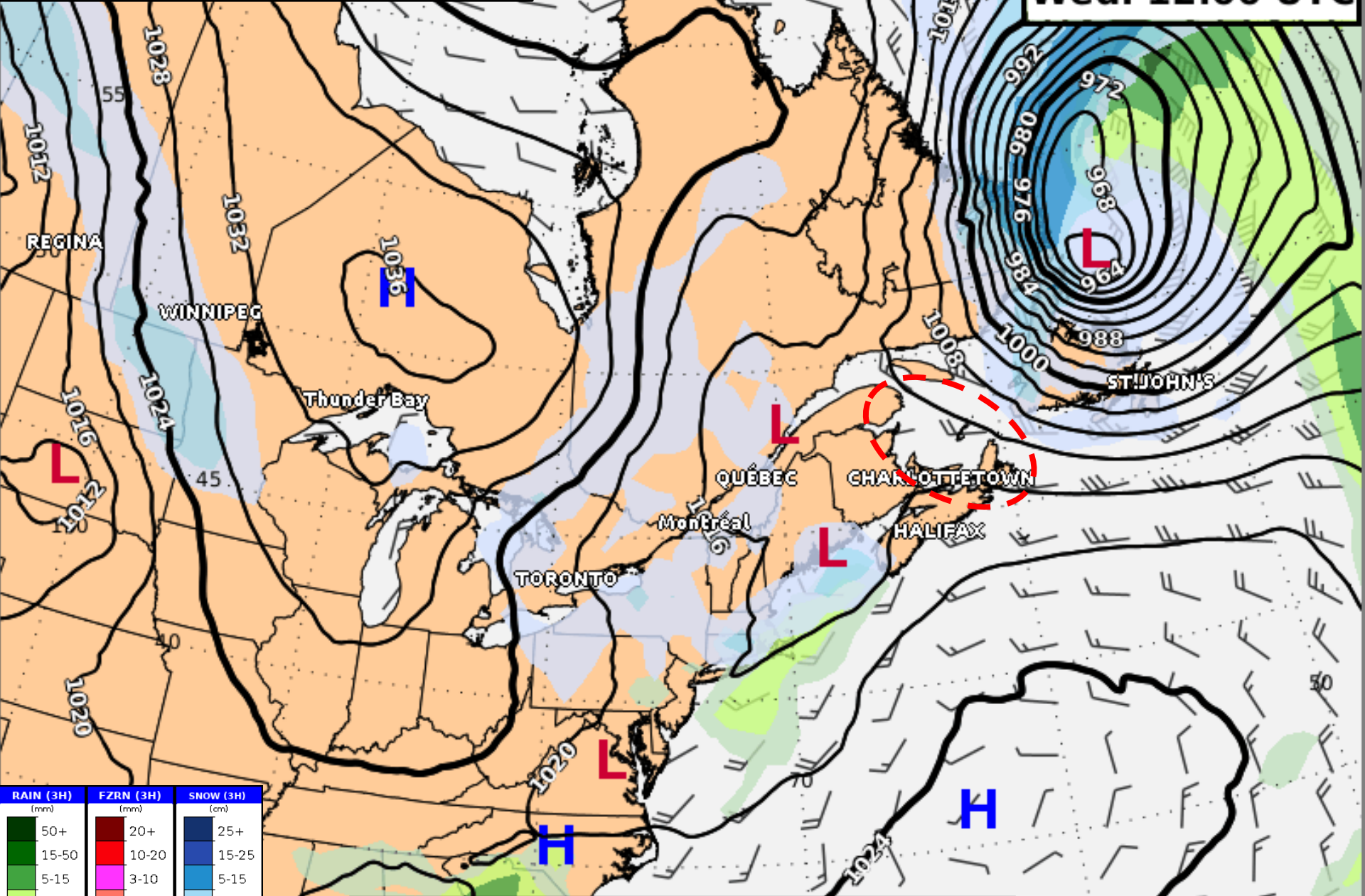
RAIN (3H) (mm)	FZRN (3H) (mm)	SNOW (3H) (cm)
50+	20+	25+
15-50	10-20	15-25
5-15	3-10	5-15
1-5	1-3	1-5
0.1-1	0.1-1	0.1-1

Not an official forecast – see <https://weather.gc.ca/> for official forecasts
General representation of direct model output - actual conditions could differ and may be more severe than depicted

Synoptic Prognosis & Precipitation

Pronostic synoptique et précipitations

Mar. 25 2026
Wed. 12:00 UTC



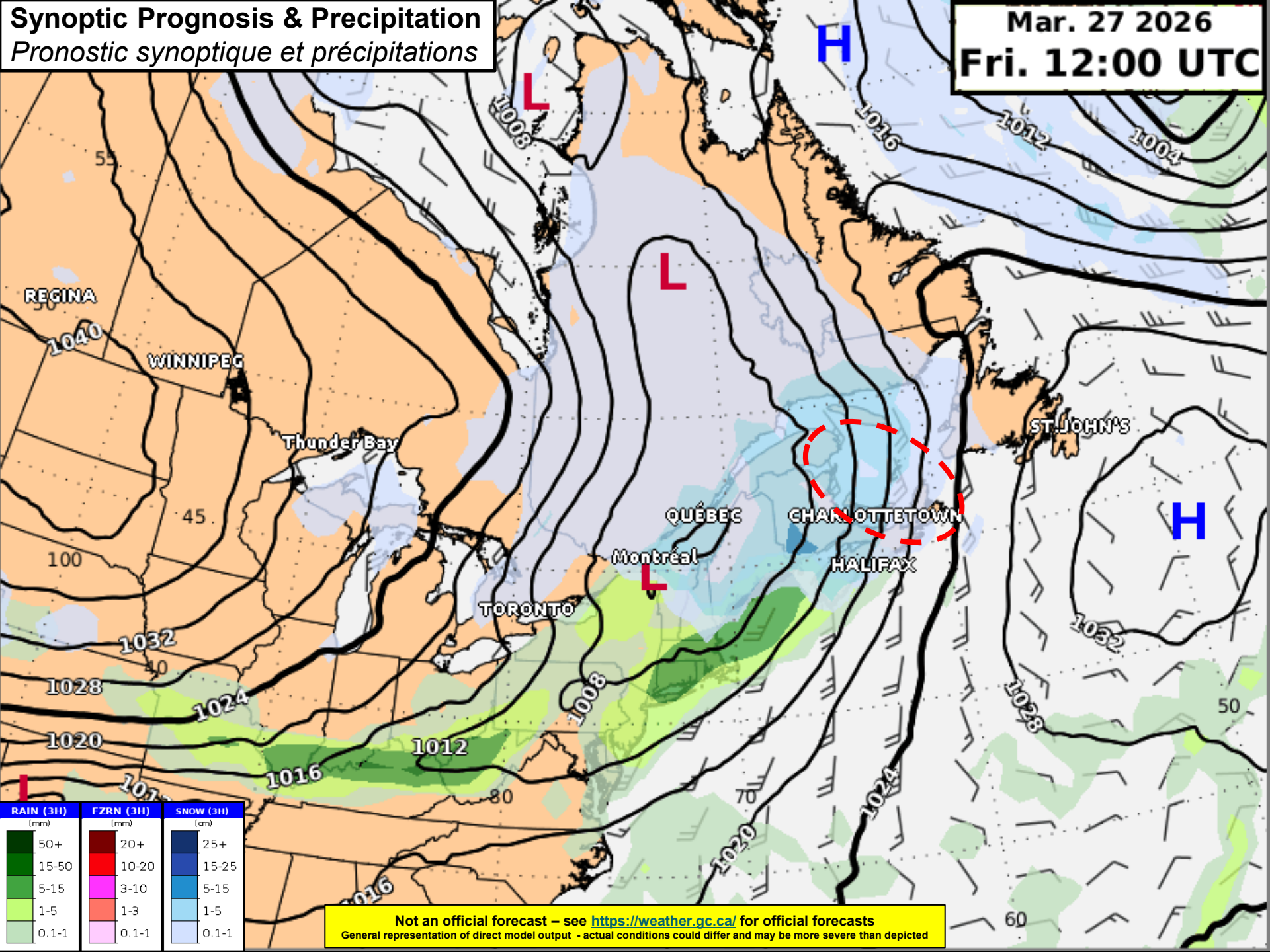
RAIN (3H) (mm)	FZRN (3H) (mm)	SNOW (3H) (cm)
50+	20+	25+
15-50	10-20	15-25
5-15	3-10	5-15
1-5	1-3	1-5
0.1-1	0.1-1	0.1-1

Not an official forecast – see <https://weather.gc.ca/> for official forecasts
General representation of direct model output - actual conditions could differ and may be more severe than depicted

Synoptic Prognosis & Precipitation

Pronostic synoptique et précipitations

Mar. 27 2026
Fri. 12:00 UTC



RAIN (3H) (mm)	FZRN (3H) (mm)	SNOW (3H) (cm)
50+	20+	25+
15-50	10-20	15-25
5-15	3-10	5-15
1-5	1-3	1-5
0.1-1	0.1-1	0.1-1

Not an official forecast – see <https://weather.gc.ca/> for official forecasts
General representation of direct model output - actual conditions could differ and may be more severe than depicted

Questions?



CONTACT US

POUR NOUS JOINDRE

St. Lawrence / Saint-Laurent

Ice Officer / Officier des Glaces

Tel: 514-283-1746 email: DFO.IceOpsStLawrence.GlacesOpsStLaurent.MPO@dfo-mpo.gc.ca

Ice Service Specialist / Spécialiste du Service des Glaces

Tel: 514-283-1752 email: ssgstlaurent-issstlawrence@ec.gc.ca

CCG Regional Operation Centre - Central & Arctic / GCC Centre Régional des Opérations - Centre et Arctique

Tel: 1-855-209-2076 email: DFO.MontrealOps-OpsMontreal.MPO@dfo-mpo.gc.ca

Atlantic / Atlantique

Ice Officer / Officier des Glaces

Tel: 709-772-2078 email: DFO.IceAtlantic-GlacesAtlantique.MPO@dfo-mpo.gc.ca

Ice Service Specialist / Spécialiste du Service des Glaces

Tel: 709-772-5901 email: ssgatlantique-issatlantic@ec.gc.ca

CCG Regional Operation Centre – Atlantic / GCC Centre Régional des Opérations - Atlantique

Tel: 709-772-6220 email: atl.roc@dfo-mpo.gc.ca



Useful Links

Liens utiles

Presentation & Pictures / *Présentation et photos*

<https://e-navigation.canada.ca/topics/ice/daily-briefings>

Ice Conditions / *Conditions des glaces*

<https://e-navigation.canada.ca/topics/ice/central/index-en>

Ice Bulletins / *Bulletin des glaces*

<https://e-navigation.canada.ca/topics/ice/central/bulletins-en>

Canadian Ice Service / *Service canadien des glaces*

<https://www.canada.ca/en/environment-climate-change/services/ice-forecasts-observations/latest-conditions.html>

